

E27 Lampholders

For discharge lamps with base E27

E27 lampholders, for cover caps (see p. 291-293)
 Profiled shape, external thread 40x2.5 IEC 60399

Nominal rating: 4/250/5 kV

Push-in twin terminals: 0.5–2.5 mm²

Fixing holes for screws M3

Rear fixing holes for self-tapping screws

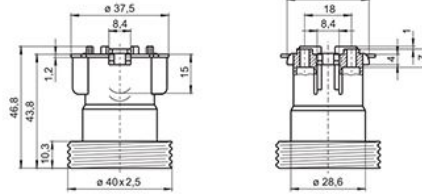
acc. to ISO 1481/7049-ST3.9-C/F

Weight: 15/16.5 g, unit: 500 pcs.

Type: 64719

Ref. No.: 505721 PET GF, black, T210

Ref. No.: 505720 LCP, black, T270



E27 lampholders, for cover caps (see p. 291-293)
 Profiled shape, plain

Nominal rating: 4/250/5 kV

Push-in twin terminals: 0.5–2.5 mm²

Fixing holes for screws M3

Rear fixing holes for self-tapping screws

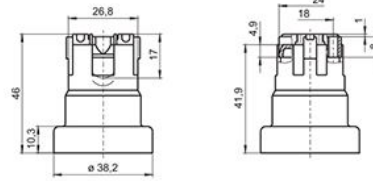
acc. to ISO 1481/7049-ST3.9-C/F

Weight: 15 g, unit: 500 pcs.

Type: 64770

Ref. No.: 505389 PET GF, black, T210

Ref. No.: 505014 LCP, black, T270



E27 lampholders

Casing: PPS, black, T230

Nominal rating: 4/500/5 kV

Screw terminals: 0.5–2.5 mm²

Spring loaded central contact

Fixing holes for screws M4 and M5

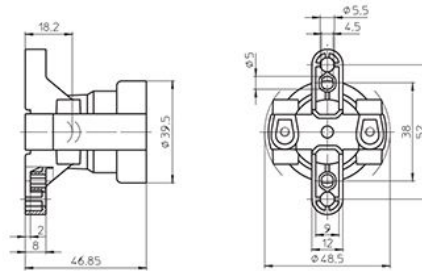
Weight: 35/35.4 g, unit: 250 pcs.

Type: 62150

Ref. No.: 108718

Type: 62151 with lamp safety catch

Ref. No.: 108719



E27 lampholders

Casing: porcelain, white, T210

Nominal rating: 4/250/5 kV

Screw terminals: 0.5–2.5 mm²

Spring loaded central contact

Oblong holes for screws M4

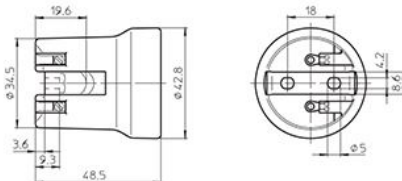
Weight: 65/67.7 g, unit: 200 pcs.

Type: 62600

Ref. No.: 102635

Type: 62601 with lamp safety catch

Ref. No.: 102637

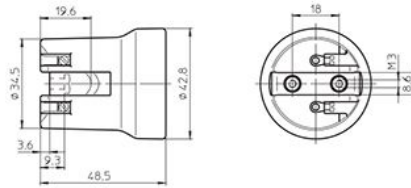


Lampholders for Discharge Lamps

E27 lampholder

Casing: porcelain, white, T210
 Nominal rating: 4/250/5 kV
 Screw terminals: 0.5–2.5 mm²
 Spring loaded central contact
 Threaded bushes for screws M3
 Weight: 69.3 g, unit: 200 pcs.
 Type: 62622

Ref. No.: 108416



1

2

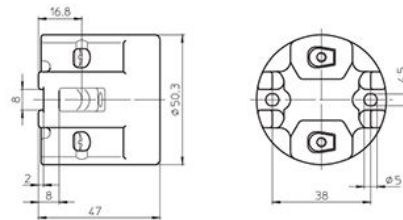
E27 lampholders

Casing: porcelain, white, T210
 Nominal rating: 4/250/5 kV
 Screw terminals: 0.5–2.5 mm²
 Spring loaded central contact
 Oblong holes for screws M4, length max. 15 mm
 Weight: 106.8/103.9 g, unit: 100 pcs.
 Type: 62104

Ref. No.: 102615

Type: 62105 with lamp safety catch

Ref. No.: 102617



3

4

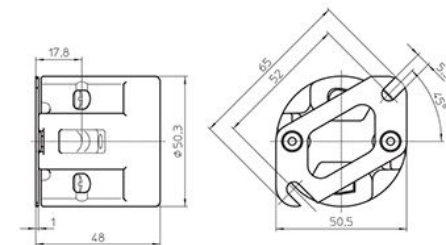
E27 lampholders

Casing: porcelain, white, T210
 Nominal rating: 4/250/5 kV
 Screw terminals: 0.5–2.5 mm²
 Spring loaded central contact
 Fixing bracket with slot for screws M5
 Weight: 113 g, unit: 100 pcs.
 Type: 62110

Ref. No.: 106585

Type: 62111 with lamp safety catch

Ref. No.: 109568



5

6

E27 lampholders

Casing: porcelain, white, T270
 Nominal rating: 4/250/5 kV
 Screw terminals: 0.5–2.5 mm²
 Spring loaded central contact
 Fixing oblong holes for screws M4
 Weight: 60.6 g, unit: 200 pcs.
 Type: 62050

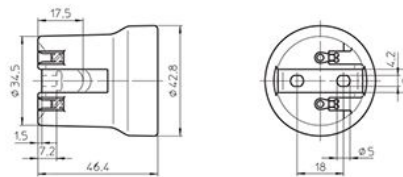
Ref. No.: 102599

Type: 62010 with lamp safety catch (with spring)

Ref. No.: 102577

Type: 62009 with lamp safety catch (with crushing)

Ref. No.: 544605



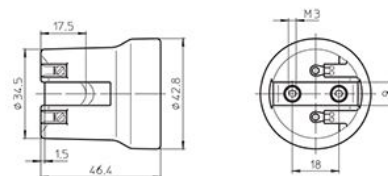
7

8

E27 lampholder

Casing: porcelain, white, T270
 Nominal rating: 4/250/5 kV
 Screw terminals: 0.5–2.5 mm²
 Spring loaded central contact
 Fastening bushes for screws M3
 Weight: 66.3 g, unit: 200 pcs.
 Type: 62015

Ref. No.: 102582



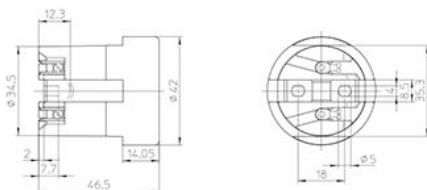
9

10

Lampholders for Discharge Lamps

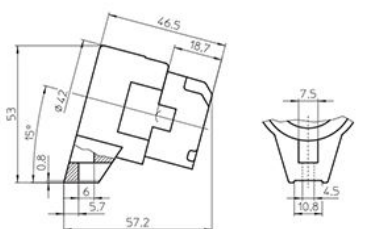
E27 lampholder, one-piece
 Material: porcelain, white, T270
 Nominal rating: 4/250/5 kV
 Screw terminals: 0.5–2.5 mm²
 Spring loaded central contact
 Fixing oblong holes for screws M4
 Weight: 60.5 g, unit: 200 pcs.
 Type: 62070

Ref. No.: 543304



E27 lampholder
 Material: porcelain, white, T270
 Nominal rating: 4/250/5 kV
 Screw terminals: 0.5–2.5 mm²
 With lateral fixing flange,
 tilt angle: 15°
 Spring loaded central contact
 Fixing hole for screw M4
 Weight: 67.6 g, unit: 200 pcs.
 Type: 62415

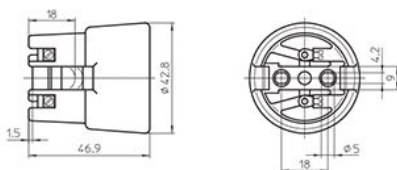
Ref. No.: 543414



E27 lampholder, for cover caps (see page 291-293)

Casing: porcelain, white, T270
 Nominal rating: 4/250/5 kV
 Screw terminals: 0.5–2.5 mm²
 Spring loaded central contact
 Fixing oblong holes for screws M4
 Weight: 66.5 g, unit: 150 pcs.
 Type: 62310

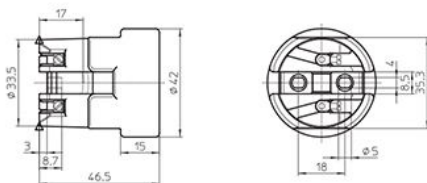
Ref. No.: 102624



E27 lampholder
 For cover caps type 80010, 97735
 and 97742 (see page 299)

Casing: porcelain, white, T270
 Nominal rating: 4/250/5 kV
 Screw terminals: 0.5–2.5 mm²
 Spring loaded central contact
 Fixing oblong holes for screw M4
 Weight: 66.5 g, unit: 200 pcs.
 Type: 62370

Ref. No.: 543303



E40 Lampholders

For discharge lamps with base E40

Nominal rating: 18/500/5 kV

Screw terminals: 1.5–4 mm²

Spring loaded central contact

E40 lampholders

Casing: PPS, black, T240

Oblong holes for screws M5

Weight: 111.7/112.1 g, unit: 40 pcs.

Type: 12600/12601

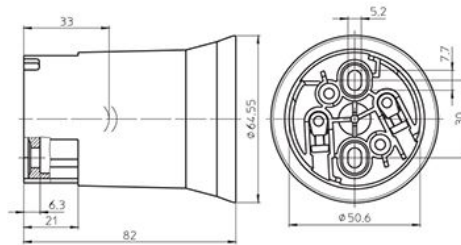
Ref. No.: 400913

Ref. No.: 400914 with lamp safety catch

With steel thread

Ref. No.: 533428

Ref. No.: 533429 with lamp safety catch



E40 lampholders

Casing: PPS, black, T240

Fixing bracket with slots for screws M5

Weight: 122.3/122.7 g, unit: 40 pcs.

Type: 12610/12611

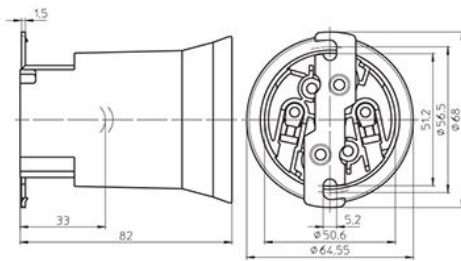
Ref. No.: 400915

Ref. No.: 400916 with lamp safety catch

With steel thread

Ref. No.: 533430

Ref. No.: 533431 with lamp safety catch



E40 lampholders

Casing: PPS, black, T240

Fixing bracket with tapped fixing holes M5

Weight: 122.9/123.3 g, unit: 40 pcs.

Type: 12614/12612

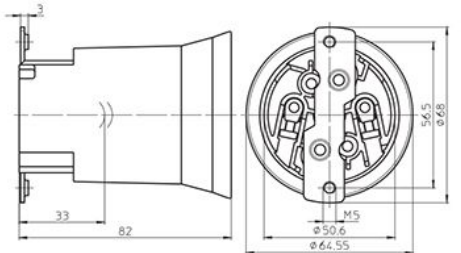
Ref. No.: 400917

Ref. No.: 400918 with lamp safety catch

With steel thread

Ref. No.: 536220

Ref. No.: 533432 with lamp safety catch



E40 lampholders

Casing: porcelain, white, T270

Oblong holes for screws M5

Weight: 224/229.3 g, unit: 48 pcs.

Type: 12800/12801

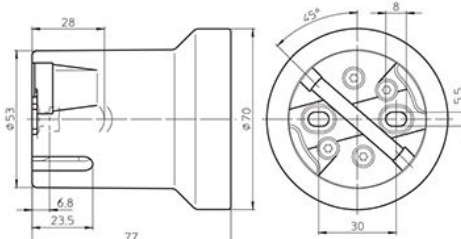
Ref. No.: 108208

Ref. No.: 107780 with lamp safety catch

With steel thread

Ref. No.: 532602

Ref. No.: 532603 with lamp safety catch



1

2

3

4

5

6

7

8

9

10

Lampholders for Discharge Lamps

E40 lampholders

Casing: porcelain, white, T270

Fixing bracket with slots for screws M5

Weight: 252.3/243 g, unit: 48 pcs.

Type: 12810/12811

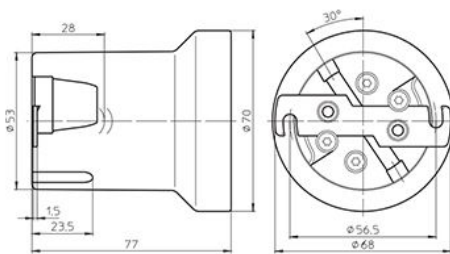
Ref. No.: 108374

Ref. No.: 108375 with lamp safety catch

With steel thread

Ref. No.: 532604

Ref. No.: 532605 with lamp safety catch



E40 lampholders

Casing: porcelain, white, T270

Fixing bracket with tapped fixing holes M5

With lamp safety catch

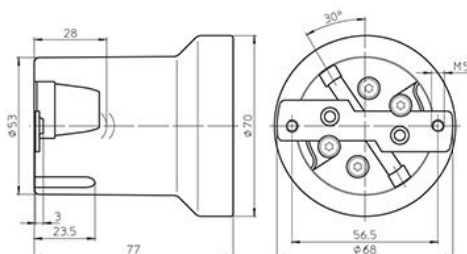
Weight: 252.8 g, unit: 48 pcs.

Type: 12812

Ref. No.: 108373

With steel thread

Ref. No.: 532606



E40 lampholders

Only for lamps with base E40/E45

Casing: porcelain, white, T270

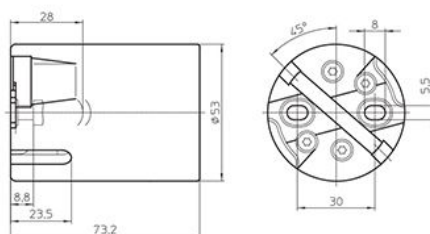
Oblong holes for screws M5

Weight: 206 g, unit: 50 pcs.

Type: 12900/12901

Ref. No.: 528252

Ref. No.: 528958 with lamp safety catch



E40 lampholders

Only for lamps with base E40/E45

Casing: porcelain, white, T270

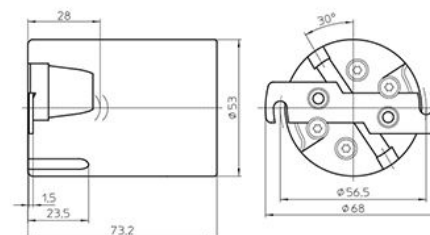
Fixing bracket with slots for screws M5

Weight: 217 g, unit: 50 pcs.

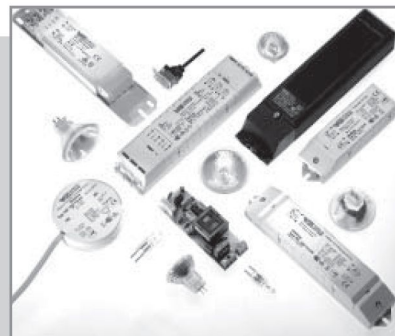
Type: 12910/12911

Ref. No.: 528253

Ref. No.: 528254 with lamp safety catch



LAMPHOLDERS MADE OF THERMO- PLASTICS, METAL AND PORCELAIN



LAMPHOLDERS FOR GENERAL-SERVICE INCANDESCENT AND RETROFIT LAMPS

The general-service light bulb owes its name to its bulbous shape, which has remained almost unchanged to this day. The tungsten filament contained within the bulb's glass shell, in which there used to be a vacuum but which is nowadays more usually filled with an inert gas, begins to glow as electricity is passed through it. Despite the considerable technical progress that has been made, the typical disadvantages associated with light bulbs still remain. For instance, incandescent lamps mainly radiate heat with no more than 5–10% light output and have a service life of approx. 1000 operating hours.

As a result of energy-efficiency regulations in the various regions of the world, the use of all-purpose incandescent lamps has been limited or even banned. Nonetheless, thanks to the many different shapes and surfaces of lamp bulbs, all-purpose incandescent lamps still have a firm place in decorative residential lighting applications and are often an important feature of luminaire designs. Retrofit lamps that comply with energy-efficiency regulations are increasingly being used as a replacement for all-purpose incandescent lamps and use the same lampholder systems found with E12/E14, E26/E27, E39/E40, B15d and B22d bases.

VS lampholders for general-service incandescent and retrofit lamps

Depending on the operating conditions, lampholders can be made of thermoplastics, metal or porcelain. Metal lampholders are most often used for high-grade decorative luminaires. In accordance with protection class I, metal lampholders must be included in the measures taken to earth the luminaire.

Due to their heat resistance, Edison lampholders made of porcelain are frequently used for higher-output lamps. Classic lampholder materials like metal and porcelain are increasingly being displaced by modern thermoplastics.



E14 lampholders

- E14 thermoplastic lampholders, one-piece and cover caps
- E14 thermoplastic lampholders, three-piece
- E14 metal lampholders, three-piece
- E14 thermoplastic rocker switch lampholders

E27 lampholders

- E27 thermoplastic lampholders, one-piece and cover caps
- E27 renovation kit lampholders
- E27 thermoplastic lampholders, three-piece
- E27 porcelain lampholders
- E27 metal lampholders, three-piece
- E27 thermoplastic pull-switch lampholders
- E27 metal pull-switch lampholders
- E27 thermoplastic rocker switch lampholders
- E27 festoon lampholders

B22d lampholders, accessories

Accessories for E14, E27 and B22d lampholders

E40 porcelain lampholders

Technical details for incandescent lamps

- General technical details
- Glossary

280-288

- 280-284
- 285-287
- 287-288
- 288

289-305

- 289-293
- 294
- 295-297
- 298-299
- 300
- 301-302
- 302-303
- 303-304
- 304-305

305-306

307-312

313

314-327

- 348-356
- 357-359

1

2

3

4

5

6

7

8

9

10

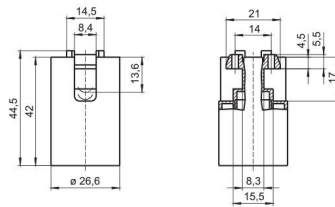
E14 Thermoplastic Lampholders, One-piece

For incandescent lamps with base E14

E14 lampholders with temperature marking
T180 on request.
Brass-finished versions are available on request.

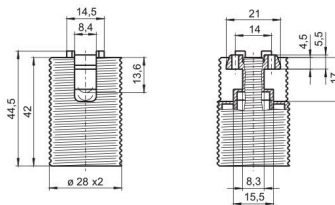
E14 lampholders, for cover caps
Plain casing
Casing: PET GF, T210, nominal rating: 2/250
Push-in twin terminals: 0.5–1.5 mm²
Rear fixing holes for self-tapping screws
acc. to ISO 1481/7049-ST2.9-C/F
Weight: 11.3/11.4 g, unit: 1000 pcs.
Type: 64001

Ref. No.: 109384 white
Ref. No.: 109383 black



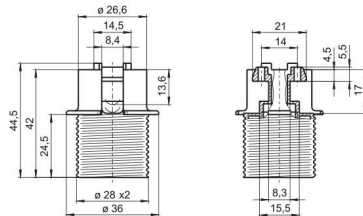
E14 lampholders, for cover caps
External thread 28x2 IEC 60399
Casing: PET GF, T210, nominal rating: 2/250
Push-in twin terminals: 0.5–1.5 mm²
Rear fixing holes for self-tapping screws
acc. to ISO 1481/7049-ST2.9-C/F
Weight: 12.5/12.2 g, unit: 1000 pcs.
Type: 64101

Ref. No.: 109387 white
Ref. No.: 109386 black



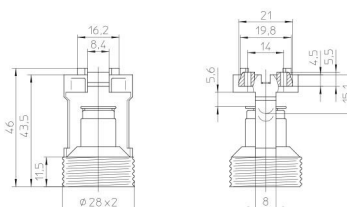
E14 lampholders, for cover caps
External thread 28x2 IEC 60399, with flange
Casing: PET GF, T210, nominal rating: 2/250
Push-in twin terminals: 0.5–1.5 mm²
Rear fixing holes for self-tapping screws
acc. to ISO 1481/7049-ST2.9-C/F
Weight: 12.7 g, unit: 1000 pcs.
Type: 64201

Ref. No.: 503924 white
Ref. No.: 503923 black



E14 lampholders, for cover caps
Profiled shape, short external thread 28x2 IEC 60399
Casing: PET GF, T210, Nominal rating: 2/250
Push-in twin terminals: 0.5–1.5 mm²
Rear fixing holes for self-tapping screws
acc. to ISO 1481/7049-ST2.9-C/F
Weight: 8.5/8.4 g, unit: 1000 pcs.
Type: 64370

Ref. No.: 546456 white
Ref. No.: 546454 black



Lampholders for General-service Incandescent

E14 lampholders

Profiled shape, short external thread 28x2 IEC 60399

Casing: PET GF, T210, nominal rating: 2/250

Push-in twin terminals: 0.5–1.5 mm²

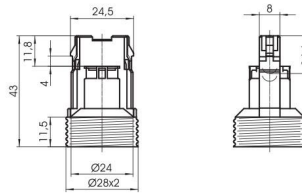
For clipping-in

Weight: 6.6/6.8 g, unit: 1000 pcs.

Type: 64360

Ref. No.: 506247 white

Ref. No.: 506249 black



1

2

E14 lampholders

Profiled shape, nominal rating: 2/250

Push-in twin terminals: 0.5–1.5 mm²

Lateral push-fit foot for cut-out 10x20 mm

for wall thickness 0.6–1.3 mm

Tilt of lamp axis: 6°

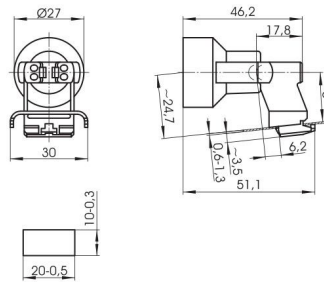
For cover cap 503579

Weight: 9.1/9.2 g, unit: 1000 pcs.

Type: 64307

Ref. No.: 108983 PBT GF, white, T180

Ref. No.: 509263 PET GF, natural, T210



3

4

E14 lampholder

Profiled shape

Casing: PET GF, white, T210

Nominal rating: 2/250

Push-in twin terminals: 0.5–1.5 mm²

For insertion, clipping-in or bayonet fixing

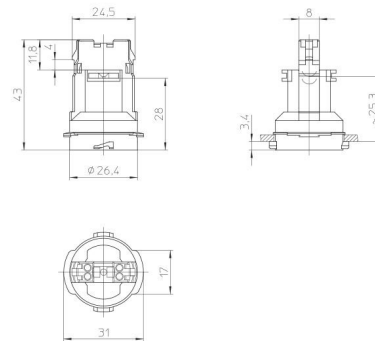
for plastic cut-out: Ø 27.5 mm

with wall thickness: 2.5 mm

Weight: 7.1 g, unit: 1000 pcs.

Type: 64308

Ref. No.: 533820



5

6

E14 lampholder

Profiled shape

Casing: PET GF, white, T250

Nominal rating: 2/250

Push-in twin terminals: 0.5–1.5 mm²

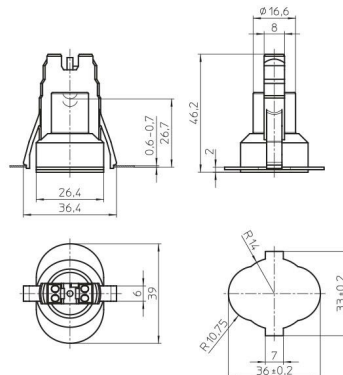
For insertion: clipping-in for

a profiled hole with wall thickness 0.6–0.7 mm

Weight: 9 g, packaging unit: 1000 pcs.

Type: 64314

Ref. No.: 564135



7

8

9

10

Cover Caps

For E14 thermoplastic lampholders, one-piece

Brass-finished versions are available on request.

Cover cap for lampholders type 64307

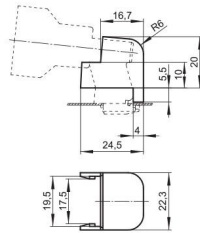
For luminaires of protection class II

Material: PP, white

Weight: 2.4 g, unit: 1000 pcs.

Type: 97322

Ref. No.: 503579



Cover caps

Material: PA GF

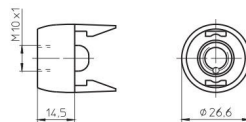
Female nipple: M10x1

Weight: 7.6/8.8 g, unit: 1000 pcs.

Type: 85075

Ref. No.: 109110 white

Ref. No.: 109112 black



Cover caps

Material: PA GF

Moulded thread: M10x1

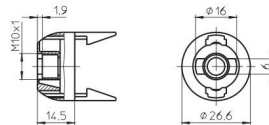
Rotation stop: external

Weight: 2.7 g, unit: 1000 pcs.

Type: 97636

Ref. No.: 109676 white

Ref. No.: 109677 black



Cover caps

Material: PA GF

Moulded thread: M10x1

Rotation stop: external

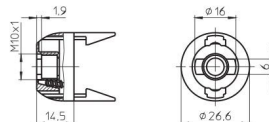
With locking screw

Weight: 3 g, unit: 1000 pcs.

Type: 85076

Ref. No.: 400818 white

Ref. No.: 400817 black



Cover caps

Height: 19 mm

Material: PA GF

Moulded thread: M10x1

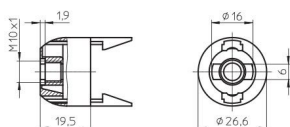
Rotation stop: external

Weight: 3.2/3.1 g, unit: 1000 pcs.

Type: 97705

Ref. No.: 520733 white

Ref. No.: 520734 black

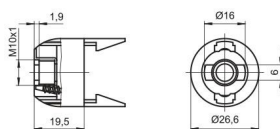


Lampholders for General-service Incandescent

Cover caps
 Height: 19 mm
 Material: PA GF
 Moulded thread: M10x1
 Rotation stop: external
 With locking screw
 Weight: 3.6/3.5 g, unit: 1000 pcs.
 Type: 85074

Ref. No.: 520735 white

Ref. No.: 520736 black

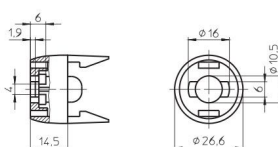


1

Cover caps
 Material: PA GF
 Round hole: Ø 10.5 mm
 Rotation stop: internal and external
 Weight: 4.3 g, unit: 1000 pcs.
 Type: 97666

Ref. No.: 109119 white

Ref. No.: 109120 black



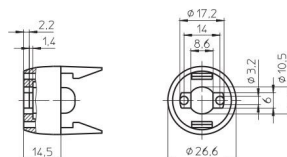
3

4

Cover caps
 Material: PA GF
 Profiled hole: Ø 10.5x8.6 mm
 Fixing holes for screws M3
 Weight: 4.4/4.3 g, unit: 1000 pcs.
 Type: 97635

Ref. No.: 109122 white

Ref. No.: 109123 black

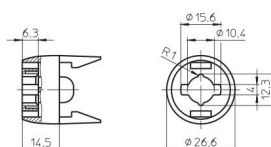


5

6

Cover cap
 Material: PA GF
 Profiled hole: Ø 10.4 mm
 Rotation stop: internal and external
 Weight: 4 g, unit: 1000 pcs.
 Type: 97697

Ref. No.: 109126 black



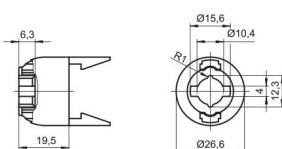
7

8

Cover caps
 Height: 19 mm
 Material: PA GF
 Profiled hole: Ø 10.4 mm
 Rotation stop: internal and external
 Weight: 2.7 g, unit: 1000 pcs.
 Type: 97708

Ref. No.: 520759 white

Ref. No.: 520760 black



9

10

Lampholders for General-service Incandescent

Cover caps

With peg

With integrated cord grip

For leads H03VVH2-F 2X0.75

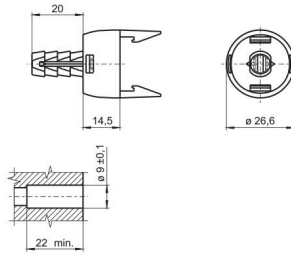
Material: PA GF

Weight: 4.2/4.3 g, unit: 1000 pcs.

Type: 97000

Ref. No.: 503457 white

Ref. No.: 503458 black



Cover cap

With male nipple: M10x1

With rotation stop

With integrated cord grip

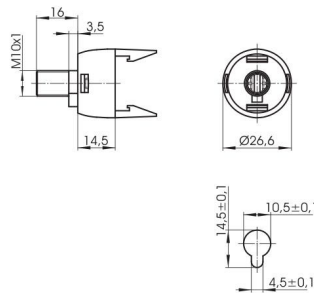
For leads H03VVH2-F 2X0.75

Material: PA GF, white

Weight: 4.1 g, unit: 1000 pcs.

Type: 97037

Ref. No.: 508067



Cover cap

External thread 28x2 IEC 60399

With integrated cord grip

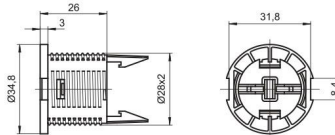
For leads H03VVH2-F 2X0.75

Material: PA GF, natural

Weight: 5.5 g, unit: 1000 pcs.

Type: 97427

Ref. No.: 509340



Cover cap

Lateral push-fit foot for cut-out 10x20 mm

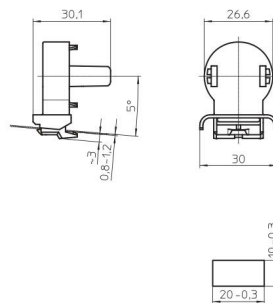
For luminaires of protection class II

Material: PA GF, white

Weight: 4.3 g, unit: 1000 pcs.

Type: 97745

Ref. No.: 546006



Cover cap

With central positioning stud

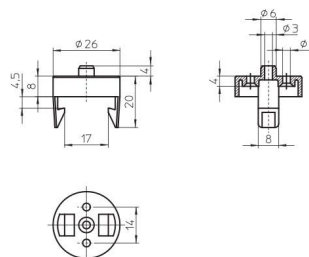
Material: PA GF

Fixing holes for countersunk screws Ø 3 mm

Weight: 3 g, unit: 1000 pcs.

Type: 91522

Ref. No.: 535357



E14 Thermoplastic Lampholders, Three-piece

For incandescent lamps with base E14

Nominal rating: 2/250

Temperature marking: T190

Brass-finished versions are available on request.

Inserts

Material: PET GF, black

Casing lock

Weight: 3.9/3.2 g, unit: 1000 pcs.

Type: 81095 screw terminals: 0.5–2.5 mm²

Ref. No.: 103424

Type: 81096 push-in twin terminals: 0.5–1.5 mm²

Ref. No.: 107716



Plain casings

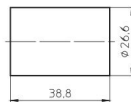
Material: PET GF

Weight: 9/8.5 g, unit: 1000 pcs.

Type: 81093

Ref. No.: 103415 white

Ref. No.: 103414 black



Threaded casings 28x2 IEC 60399

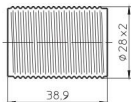
Material: PET GF

Weight: 9.8/9.6 g, unit: 1000 pcs.

Type: 81109

Ref. No.: 103431 white

Ref. No.: 103430 black



Threaded casings 28x2 IEC 60399

With flange

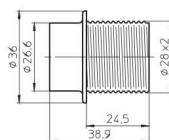
Material: PET GF

Weight: 10.6/10.4 g, unit: 1000 pcs.

Type: 81120

Ref. No.: 103443 white

Ref. No.: 103442 black



1



2

3



4

5



6

7



8

9

10

Lampholders for General-service Incandescent

Caps

Material: PA GF

Female nipple: M10x1

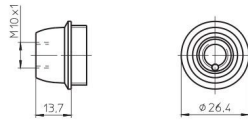
Height: 13.7 mm

Weight: 6.9/7.2 g, unit: 1000 pcs.

Type: 81002

Ref. No.: 109102 white

Ref. No.: 109103 black



Caps

Material: PA GF

Female nipple: M10x1

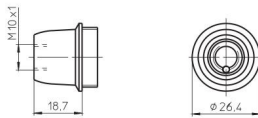
Height: 18.7 mm

Weight: 7.7/7.3 g, unit: 1000 pcs.

Type: 81024

Ref. No.: 109805 white

Ref. No.: 109145 black



Caps

Material: PA GF

Moulded thread: M10x1

Rotation stop: external

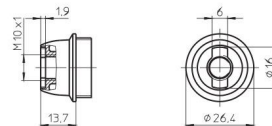
Height: 13.7 mm

Weight: 3.3/3.7 g, unit: 1000 pcs.

Type: 96159

Ref. No.: 109095 white

Ref. No.: 109084 black



Caps

Material: PA GF

Moulded thread: M10x1

Rotation stop: external

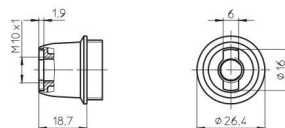
Height: 18.7 mm

Weight: 3.6/3.9 g, unit: 1000 pcs.

Type: 96211

Ref. No.: 109149 white

Ref. No.: 109150 black



Caps

Material: PA GF

Moulded thread: M10x1

Rotation stop: external

With locking screw

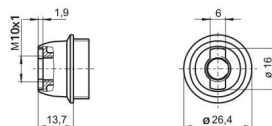
Height: 13.7 mm

Weight: 3.7/4 g, unit: 1000 pcs.

Type: 81130

Ref. No.: 109041 white

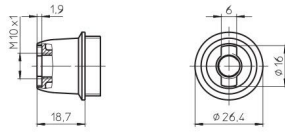
Ref. No.: 109054 black



Lampholders for General-service Incandescent

Caps

Material: PA GF
 Moulded thread: M10x1
 Rotation stop: external
 With locking screw
 Height: 18.7 mm
 Weight: 3.9/4.3 g, unit: 1000 pcs.
 Type: 81132
Ref. No.: 109152 white
Ref. No.: 109153 black

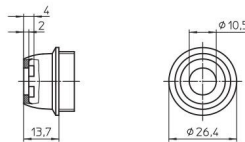


1

2

Caps

Material: PA GF
 Round hole: \varnothing 10.5 mm
 Rotation stop: internal
 Height: 13.7 mm
 Weight: 3.3 g, unit: 1000 pcs.
 Type: 96004
Ref. No.: 508352 white
Ref. No.: 508353 black



3

4

E14 Metal Lampholders, Three-piece

For incandescent lamps with base E14

Nominal rating: 2/250
 Temperature marking: T190/T240
 Type: 513 plain casing
 Type: 514 threaded casing 28x2



5

6

Insert

Material: porcelain, white
 Casing lock
 Screw terminals: 0.5–2.5 mm²
 Weight: 10.3 g, unit: 500 pcs.
 Type: 83142
Ref. No.: 550375

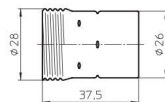


7

8

Plain casings

Material: zinc-coated polished steel
 Weight: 14.3/14.2/18.3/18.2 g
 Unit: 500 pcs.
 Type: 81019 insulating threaded ring: duroplastic, T190
Ref. No.: 103359 chrome-finish
Ref. No.: 103360 brass-finish
 Type: 81018 insulating threaded ring: steatite, T240
Ref. No.: 507049 chrome-finish
Ref. No.: 507050 brass-finish



9

10

Lampholders for General-service Incandescent

Threaded casings 28x2 IEC 60399

Material: zinc-coated polished steel

Weight: 14.4/14.4/18.9/18.9 g

Unit: 500 pcs.

Type: 81022 insulating threaded ring: duroplastic, T190

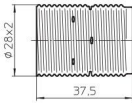
Ref. No.: 103365 chrome-finish

Ref. No.: 103366 brass-finish

Type: 81017 insulating threaded ring: steatite, T240

Ref. No.: 507052 chrome-finish

Ref. No.: 507053 brass-finish



Caps

Material: zinc-coated polished steel

Female nipple: M10x1

Weight: 7.2/7.1/7.9/7.8 g

Unit: 500 pcs.

Type: 80006

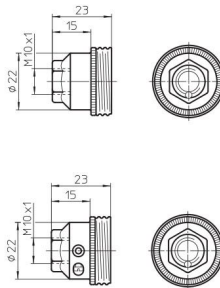
Ref. No.: 102946 chrome-finish

Ref. No.: 102947 brass-finish

Type: 80003 with earth terminal

Ref. No.: 102938 chrome-finish

Ref. No.: 102939 brass-finish



E14 Thermoplastic Rocker Switch Lampholders

For incandescent lamps with base E14

Nominal rating: 2/250

Temperature marking: T160

Suitable casings see page 293:

Type: 81093 plain casing

Type: 81109 threaded casing 28x2

Type: 81120 threaded casing 28x2, with flange

Inserts with switch

Material: PET GF

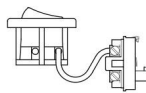
Screw terminals: 0.5–2.5 mm²

Weight: 7.9 g, unit: 1000 pcs.

Type: 83141

Ref. No.: 537087 switch, white

Ref. No.: 537088 switch, black



Caps

Material: PET GF

Moulded thread: M10x1

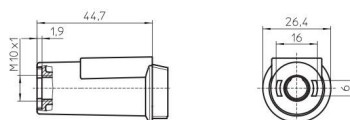
with locking screw

Weight: 9.9 g, unit: 1000 pcs.

Type: 81100

Ref. No.: 537079 white

Ref. No.: 537080 black



E27 Thermoplastic Lampholders, One-piece

For incandescent lamps with base E27

E27 lampholders with temperature marking

T180 on request.

Brass-finished versions are available on request.

E27 lampholders, for cover caps

Plain casing

Casing: PET GF, T210

Nominal rating: 4/250

Push-in twin terminals: 0.5–2.5 mm²

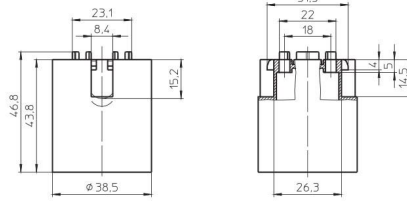
Fixing holes for screws M4

Weight: 17.4 g, unit: 500 pcs.

Type: 64401

Ref. No.: 108936 white

Ref. No.: 500810 black



E27 lampholders, for cover caps

External thread 40x2.5 IEC 60399

Casing: PET GF, T210

Nominal rating: 4/250

Push-in twin terminals: 0.5–2.5 mm²

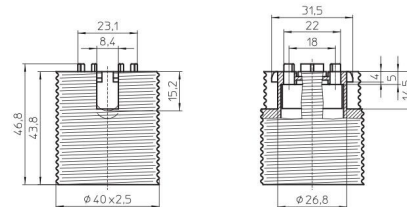
Fixing holes for screws M4

Weight: 19.1/18.8 g, unit: 500 pcs.

Type: 64501

Ref. No.: 108965 white

Ref. No.: 109429 black



E27 lampholders, for cover caps

External thread 40x2.5 IEC 60399, with flange

Casing: PET GF, T210

Nominal rating: 4/250

Push-in twin terminals: 0.5–2.5 mm²

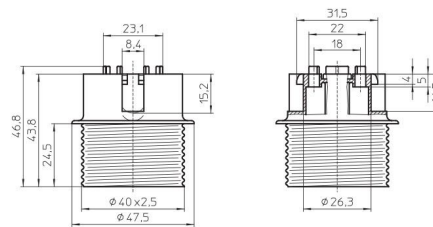
Fixing holes for screws M4

Weight: 21.4 g, unit: 500 pcs.

Type: 64601

Ref. No.: 501358 white

Ref. No.: 501356 black



E27 lampholders, for cover caps

Profiled shape, external thread 40x2.5 IEC 60399

Casing: PET GF, T210, nominal rating: 4/250

Push-in twin terminals: 0.5–2.5 mm²

Fixing holes for screws M3

Rear fixing holes for self-tapping screws

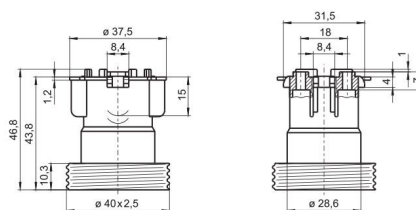
acc. to ISO 1481/7049-ST3.9-C/F

Weight: 14.8/14.9 g, unit: 500 pcs.

Type: 64719

Ref. No.: 504303 white

Ref. No.: 504302 black



1

2

3

4

5

6

7

8

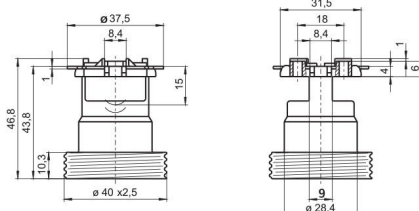
9

10

Lampholders for General-service Incandescent

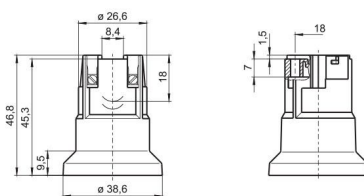
E27 lampholders, for cover caps
 Profiled shape, external thread 40x2.5 IEC 60399
 Casing: PET GF, T210, nominal rating: 4/250
 Push-in twin terminals: 0.5–2.5 mm²
 Fixing holes for screws M3
 Rear fixing holes for self-tapping screws
 acc. to ISO 1481/7049-ST3.9-C/F
 Weight: 11.4/11.3 g, unit: 500 pcs.
 Type: 64775

Ref. No.: 506255 white
Ref. No.: 506257 black



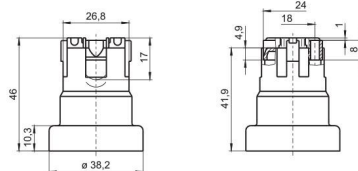
E27 lampholders
 Profiled shape, plain, nominal rating: 4/250
 Screw terminals: 0.5–2.5 mm²
 Fixing holes for screws M3
 Rear fixing holes for self-tapping screws
 acc. to ISO 1481/7049-ST3.9-C/F
 Weight: 11.7/11.5/13 g, unit: 500 pcs.
 Type: 64785

Ref. No.: 506263 PET GF, white, T210
Ref. No.: 506265 PET GF, black, T210
Ref. No.: 506267 LCP, natural, T270



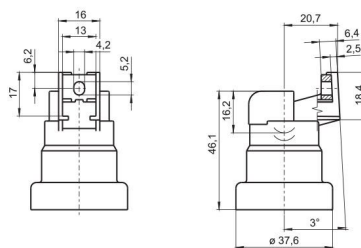
E27 lampholders
 For cover caps type 97545/80023 (see p. 292)
 Profiled shape, plain, nominal rating: 4/250
 Push-in twin terminals: 0.5–2.5 mm²
 Fixing holes for screws M3
 Rear fixing holes for self-tapping screws
 acc. to ISO 1481/7049-ST3.9-C/F
 Weight: 11.5/14.9 g, unit: 500 pcs.
 Type: 64770

Ref. No.: 108953 PET GF, natural, T210
Ref. No.: 109838 LCP, natural, T270



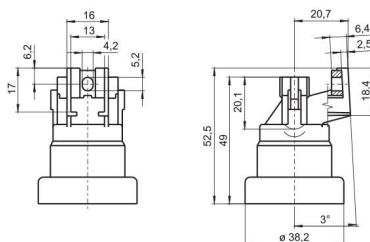
E27 lampholder
 For luminaires of protection class II
 Profiled shape, plain
 Casing: PET GF, white, T210
 Nominal rating: 4/250
 Screw terminals: 0.5–2.5 mm²
 Lateral fixing hole for screw M4
 Tilt of lamp axis: 3°
 Weight: 15.2 g, unit: 500 pcs.
 Type: 64781

Ref. No.: 503041



E27 lampholders
 Profiled shape, plain
 Casing: PET GF, T210
 Nominal rating: 4/250
 Push-in twin terminals: 0.5–2.5 mm²
 Lateral fixing hole for screw M4
 Tilt of lamp axis: 3°
 Weight: 13.3 g, unit: 500 pcs.
 Type: 64740

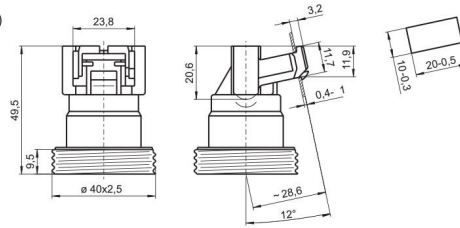
Ref. No.: 108747 white
Ref. No.: 529599 natural



Lampholders for General-service Incandescent

E27 lampholder

Profiled shape, external thread 40x2.5 IEC 60399
 Casing: PET GF, natural, T210, nominal rating: 4/250
 Push-in twin terminals: 0.5–2.5 mm²
 Lateral push-fit foot for cut-out 10x20 mm
 Fixing clips for wall thickness 0.4–1 mm
 Tilt of lamp axis: 12°
 For cover cap 504615 (see below)
 Weight: 14.7 g, unit: 500 pcs.
 Type: 64741
Ref. No.: 108758



1

2

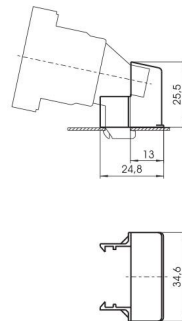
3

4

Cover Caps

For E27 thermoplastic lampholders, one-piece and for B22d thermoplastic lampholders

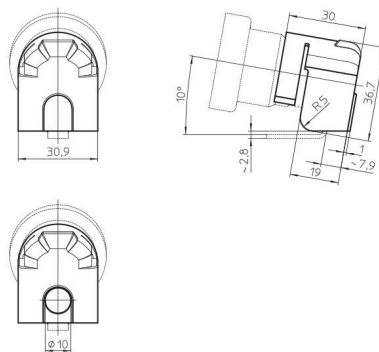
Cover cap for lampholder 108758 (see above)
 For luminaires of protection class II
 Material: PA GF, white
 Weight: 2.7 g, unit: 500 pcs.
 Type: 97321
Ref. No.: 504615



5

6

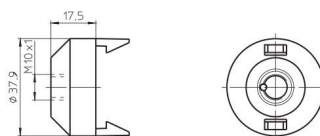
Protection caps for E27 lampholders with bracket with earth connection 400772 (s. p. 309)
 For lampholder type 64770/64785 (s. p. 290)
 For luminaires of protection class II
 Material: PA GF, natural
 Weight: 4.8 g, unit: 500 pcs.
 Type: 97497
Ref. No.: 526886
 Type: 97498 fixing hole: \varnothing 10 mm
Ref. No.: 529464



7

8

Cover caps
 Material: PA GF
 Female nipple: M10x1
 Weight: 9.6/9.9 g, unit: 500 pcs.
 Type: 85070
Ref. No.: 109077 white
Ref. No.: 109092 black



9

10

Lampholders for General-service Incandescent

Cover caps

Material: PA GF

Moulded thread: M10x1

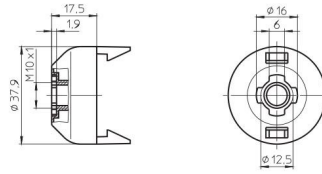
Cross groove for rotation stop: external

Weight: 4.4/4.6 g, unit: 500 pcs.

Type: 97665

Ref. No.: 109679 white

Ref. No.: 109680 black



Cover caps

Material: PA GF

Moulded thread: M10x1

Cross groove for rotation stop: external

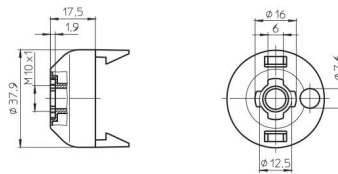
With lateral hole

Weight: 4/4.6 g, unit: 500 pcs.

Type: 97664

Ref. No.: 109795 white

Ref. No.: 109794 black



Cover caps

Material: PA GF

Moulded thread: M10x1

Cross groove for rotation stop: external

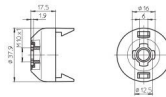
With locking screw

Weight: 4.7/4.9 g, unit: 500 pcs.

Type: 85077

Ref. No.: 400819 white

Ref. No.: 400820 black



Cover caps

For E27 lampholders type 64770

Material: PA GF, black

Moulded thread: M10x1

Cross groove for rotation stop: external

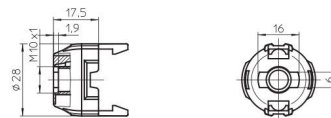
Weight: 3.1/3.4 g, unit: 500 pcs.

Type: 97545

Ref. No.: 532390

Type: 80023 with locking screw

Ref. No.: 532391



Cover caps

Material: PA GF

Profiled hole: Ø 10.4 mm

Rotation stop: internal and external

Weight: 5.7/5.9 g, unit: 500 pcs.

Type: 97698

Ref. No.: 109560 white

Ref. No.: 109184 black

