

Starter Holders, Accessories

For starters acc. to DIN VDE 0712 part 101, IEC 60155

Starter holders with central studs, suitable for luminaires of protection class II, are available on request.

Starter holder

Material: PC, white

T110, nominal rating: 2/250

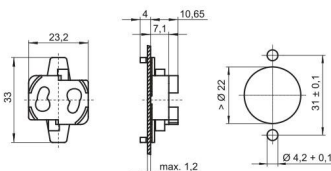
Push-in terminals: 0.5–1 mm²

Rear split pins for wall thickness up to 1.2 mm

Weight: 2.1 g, unit: 1000 pcs.

Type: 02113

Ref. No.: 535131



Starter holder

Material: PC, white

T110, nominal rating: 2/250

Push-in terminals: 0.5–1 mm², single-core

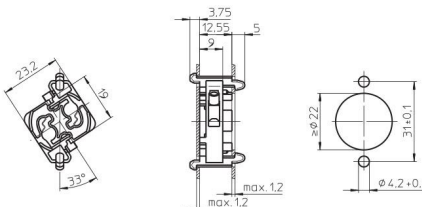
Front and rear split pins for wall thickness up to 1.2 mm

Rear of starter holder/luminaire: IP40

Weight: 2.8 g, unit: 1000 pcs.

Type: 02110

Ref. No.: 109784



Starter holder

Material: PC, white

T110, nominal rating: 2/250

Push-in terminals: 0.5–1 mm²

Rear split pins for wall thickness up to 1.2 mm

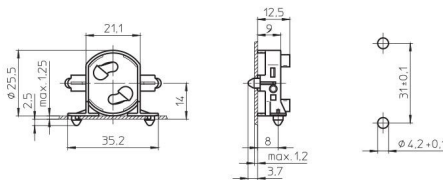
Lateral split pins for wall thickness up to 1.25 mm

Rear of starter holder/luminaire: IP40

Weight: 3.7 g, unit: 1000 pcs.

Type: 02120

Ref. No.: 100064



Starter holder

Material: PC, white

T110, nominal rating: 2/250

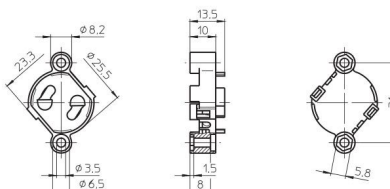
Push-in terminals: 0.5–1 mm²

Fixing holes for screws M3

Weight: 3.8 g, unit: 1000 pcs.

Type: 02150

Ref. No.: 100069



Starter Holders and Terminal Blocks, Accessories

Starter holder

Material: PC, white

T110, nominal rating: 2/250

Push-in terminals: 0.5–1 mm²

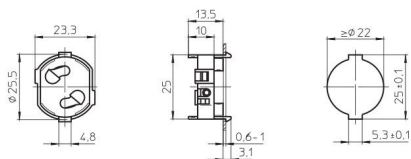
Front split pins, flat

for wall thickness 0.6–1 mm

Weight: 3.1 g, unit: 1000 pcs.

Type: 02170

Ref. No.: 106818



1

2

Starter holder

Material: PC, white

T110, nominal rating: 2/250

Push-in terminals: 0.5–1 mm²

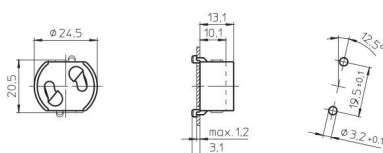
Rear split pins for wall thickness up to 1.2 mm

Rear of starter holder/luminaire: IP40

Weight: 3.3 g, unit: 1000 pcs.

Type: 43000

Ref. No.: 101627



3

4

Starter holder

Material: PC, white

T110, nominal rating: 2/250

Push-in terminals: 0.5–1 mm²

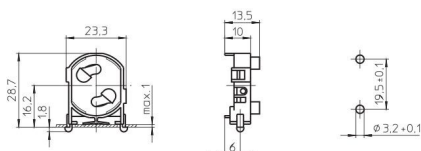
Lateral split pins for wall thickness up to 1 mm

Rear of starter holder/luminaire: IP40

Weight: 3.4 g, unit: 1000 pcs.

Type: 43010

Ref. No.: 101629



5

6

Starter holder

Material: PC, white

T110, nominal rating: 2/250

Push-in terminals: 0.5–1 mm²

Rear and lateral split pins

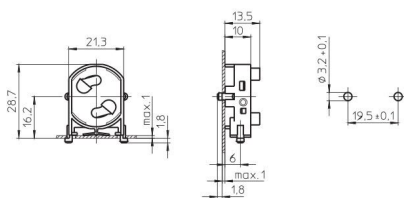
for wall thickness up to 1 mm

Rear of starter holder/luminaire: IP40

Weight: 3.5 g, unit: 1000 pcs.

Type: 43020

Ref. No.: 108671



7

8

Starter holder

Material: PC, white

T110, nominal rating: 2/250

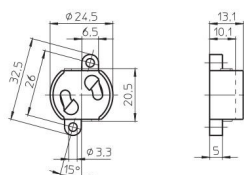
Push-in terminals: 0.5–1 mm²

Fixing holes for screws M3

Weight: 3.7 g, unit: 1000 pcs.

Type: 43100

Ref. No.: 101631



9

10

Starter Holders and Terminal Blocks, Accessories

Starter holder

Material: PC, white

T110, nominal rating: 2/250

Push-in terminals: 0.5–1 mm², single-core

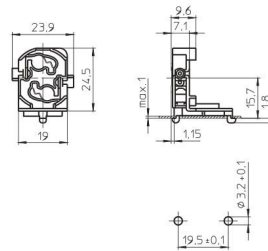
Lateral split pins for wall thickness up to 1 mm

Rear of starter holder/luminaire: IP40

Weight: 3.7 g, unit: 1000 pcs.

Type: 43200

Ref. No.: 109790



Starter holder

Material: PC, white

T110, nominal rating: 2/250

Push-in terminals: 0.5–1 mm², single-core

Rear split pins for wall thickness up to 1.2 mm

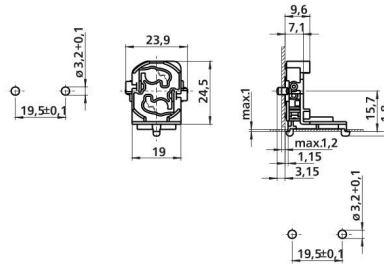
Lateral split pins for wall thickness up to 1 mm

Rear of starter holder/luminaire: IP40

Weight: 3.7 g, unit: 1000 pcs.

Type: 43210

Ref. No.: 109792



Starter holder with integrated extension piece

Material: PC, white

T110, nominal rating: 2/250

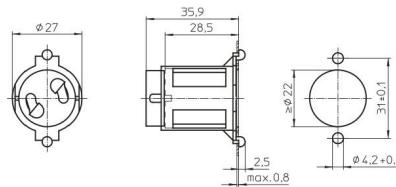
Push-in terminals: 0.5–1 mm²

Front split pins for wall thickness up to 0.8 mm

Weight: 5.4 g, unit: 1000 pcs.

Type: 43300

Ref. No.: 101636



Starter holder with integrated extension piece

Material: PC, white

For the automatic luminaire wiring

T110, nominal rating: 2/250

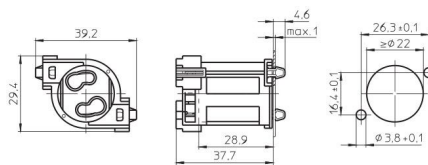
IDC terminals for leads H05V-U 0.5

Front split pins for wall thickness up to 1 mm

Weight: 5.4 g, unit: 1000 pcs.

Type: 43500

Ref. No.: 108454



Starter holder

Material: PC, white

T110, nominal rating: 2/250

Push-in terminals: 0.5–1 mm²

For the automatic luminaire wiring:

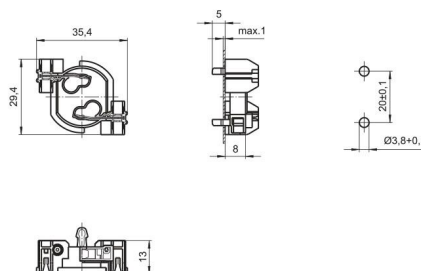
IDC terminals for leads H05V-U 0.5

Rear split pins for wall thickness up to 1 mm

Weight: 3 g, unit: 1000 pcs.

Type: 43520

Ref. No.: 530079



Starter Holders and Terminal Blocks, Accessories

Starter holder

Material: PA, white

T110, nominal rating: 2/250

For the automatic luminaire wiring:

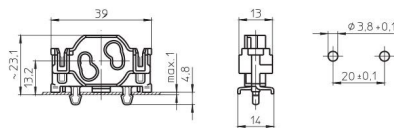
IDC terminals for leads H05V-U 0.5

Lateral split pins for wall thickness up to 1 mm

Weight: 3 g, unit: 1000 pcs.

Type: 43410

Ref. No.: 107445



1

2

Extension piece

For front clip-in fixing into luminaire metal sheets

For use with starter holder 109784 (see p. 200)

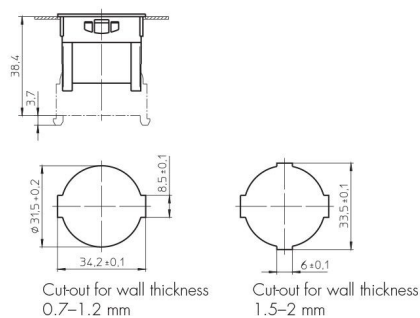
For screw caps type 97065

Material: PC, white

Weight: 3.5 g, unit: 500 pcs.

Type: 97064

Ref. No.: 105482



3

4

Screw caps for degree of protection IP54/IP65/IP67

For extension piece 105482

Material: PP

Gasket: EPDM cellular rubber

Weight: 3.2/4/0.3 g, unit: 500 pcs.

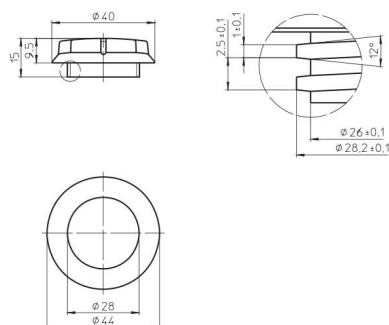
Type: 97065 screw cap

Ref. No.: 105483 white

Ref. No.: 109575 grey

Type: 98086 gasket

Ref. No.: 106095



5

6

7

8

9

10

Terminal Blocks, Accessories

Suitable only for solid conductors on the secondary connection

Terminal blocks

Casing: PC, white, T85

Nominal rating: 450 V

Primary connection with release button:

push-in twin terminals 0.5–2.5 mm²/16 A

Secondary connection:

push-in twin terminals 0.5–1.5 mm²/16 A
and 0.5–2.5 mm²/16 A

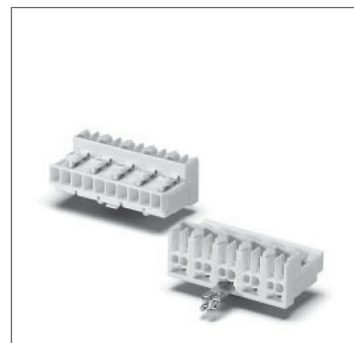
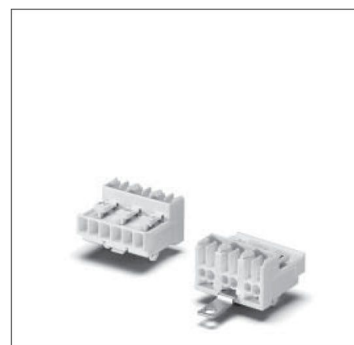
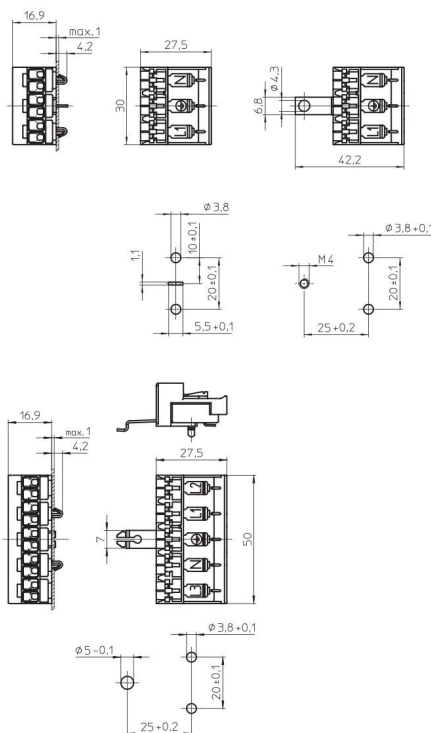
Connection for X2 RFI-suppression capacitor:

0.5–0.75 mm², capacitor's pins must be insulated (stripped lead ends: 8+1 mm)

For the automatic luminaire wiring:

IDC terminals for leads H05V-U 0.5/6 A

Base split pins for wall thickness 0.6–1 mm



Type	Ref. No.	Number of poles	Earth-contact connection	Mark	Weight (g)	Unit (pcs.)
41500	533312	3-poles	not earthed	N, L2, L1	9.2	500
41510	533313	3-poles	earth spike	N, PE, L1	9.4	500
41520	533314	3-poles	earth strap M4	N, PE, L1	10	500
41530	534948	3-poles	earth finger	N, PE, L1	10	500
41540	533315	5-poles	not earthed	L3, L2, L4, N, L1	15.1	500
41550	533316	5-poles	earth spike	L3, L2, PE, N, L1	15.3	500
41560	533317	5-poles	earth strap M4	L3, L2, PE, N, L1	16	500
41570	534954	5-poles	earth finger	L3, L2, PE, N, L1	16	500

Push-in cord grip

For terminal blocks type 415

For leads with insulation max. Ø 10.5 mm

Conductor fixed with self-tapping screws

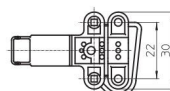
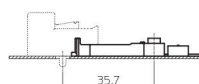
acc. to ISO 1481/7049-ST2.9-C/F

Material: PA, white

Weight: 2.2 g, unit: 500 pcs.

Type: 97734

Ref. No.: 535474



Starter Holders and Terminal Blocks, Accessories

Terminal blocks

Casing: PC, white, T85

Nominal rating: 450 V

Primary connection:

screw terminals 2.5 mm²

Secondary connection:

push-in twin terminals 1.5 mm²

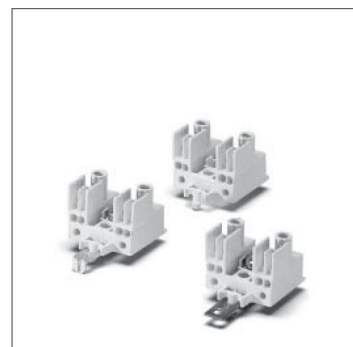
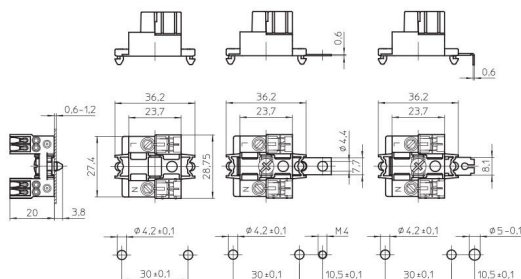
(with IDC contacts: 1 mm²)

push-in terminal 0.5 mm²

For the automatic luminaire wiring:

IDC terminals for leads H05V-U 0.5

Base split pins for wall thickness 0.6–1.2 mm



1

2

3

4

Type	Ref. No.	IDC	Number of poles	Earth-contact connection	Weight (g)	Unit (pcs.)
40660	543793	no	3-poles	not earthed	5.7	1000
40662	543795	no	3-poles	earth strap M4	8.4	1000
40666	543800	no	3-poles	earth finger	8.3	1000
40661	543794	yes	3-poles	not earthed	6	1000
40663	543796	yes	3-poles	earth strap M4	8.7	1000
40667	547801	yes	3-poles	earth finger	8.6	1000

Terminal blocks with fuse holder

Material: PC, white, T70

nominal rating: 250 V

Primary connection: screw terminals 2.5 mm²

Secondary connection:

push-in twin terminals 1.5 mm²

(with IDC contacts: 1 mm²)

push-in terminal 0.5 mm²

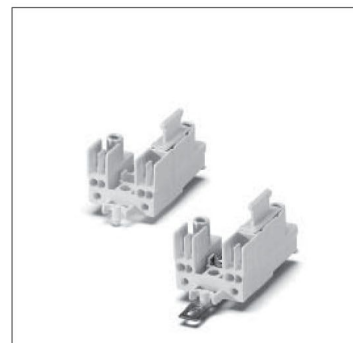
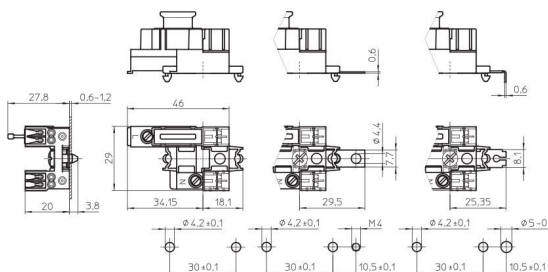
For the automatic luminaire wiring:

IDC terminals for leads H05V-U 0.5

With retaining clip for fuses 5x20 mm

With integrated fuse on request

Base split pins for wall thickness 0.6–1.2 mm



5

6

7

Type	Ref. No.	IDC	Number of poles	Earth-contact connection	Weight (g)	Unit (pcs.)
40670	543802	no	3-poles	not earthed	8.7	1000
40672	543805	no	3-poles	earth strap M4	11.5	1000
40676	543809	no	3-poles	earth finger	14.1	1000
40671	543803	yes	3-poles	not earthed	9.0	1000
40673	543806	yes	3-poles	earth strap M4	11.8	1000
40677	543810	yes	3-poles	earth finger	14.4	1000

8

9

10

Starter Holders and Terminal Blocks, Accessories

Terminal blocks

Casing: PC, grey, T85

Nominal rating: 450 V

Primary connection:

screw terminals 2.5 mm²

Secondary connection:

push-in twin terminal 1.5 mm²

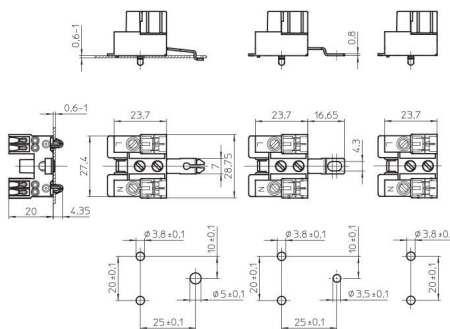
(with IDC contacts: 1 mm²)

push-in terminal 0.5 mm²

For the automatic luminaire wiring:

IDC terminals for leads H05V-U 0.5

Base split pins for wall thickness 0.6–1.2 mm



Type	Ref. No.	IDC	Number of poles	Earth-contact connection	Weight (g)	Unit (pcs.)
40560	543770	no	3-poles	not earthed	8	1000
40562	543772	no	3-poles	earth strap M4	8.7	1000
40566	543777	no	3-poles	earth finger	8.8	1000
40561	543771	yes	3-poles	not earthed	8.3	1000
40563	543773	yes	3-poles	earth strap M4	9	1000
40567	543778	yes	3-poles	earth finger	9.1	1000

Terminal blocks with fuse holder

Material: PBT, grey, T70

Nominal rating: 250 V

Primary connection: screw terminals 2.5 mm²

Secondary connection:

push-in twin terminals 1.5 mm²

(with IDC contacts: 1 mm²)

push-in terminal 0.5 mm²

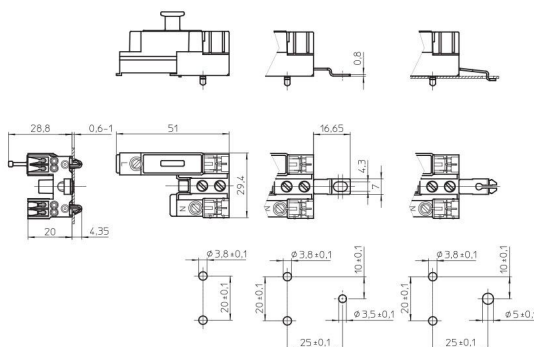
For the automatic luminaire wiring:

IDC terminals for leads H05V-U 0.5

With retaining clip for fuses 6x25 mm

With integrated fuse on request

Base split pins for wall thickness 0.6–1.2 mm

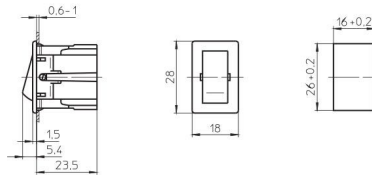


Type	Ref. No.	IDC	Number of poles	Earth-contact connection	Weight (g)	Unit (pcs.)
40570	543781	no	3-poles	not earthed	11	500
40572	543783	no	3-poles	earth strap M4	11.7	500
40576	543787	no	3-poles	earth finger	11.8	500
40571	543782	yes	3-poles	not earthed	11.3	500
40573	543784	yes	3-poles	earth strap M4	12	500
40577	543788	yes	3-poles	earth finger	12.1	500

Built-in Rocker Switches

Built-in rocker switch 1-pole
For cut-out 16x26 mm
Casing: PC, white, T100
Contact pillar and rocker: PBT, white
Terminal: nichrome steel
Nominal rating: 6(2)/250~
Push-in terminals: 0.5–1 mm²
Lateral fixing clips for wall thickness 0.6–1 mm
Weight: 7.2 g, unit: 500 pcs.
Type: 20200

Ref. No.: 100437



1

2

3

4

5

6

7

8

9

10