

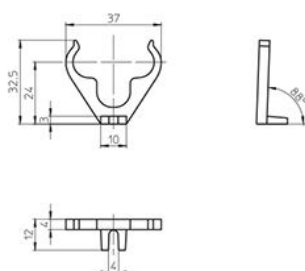
Accessories

For single-ended compact fluorescent lamps

The luminaire manufacturer is responsible for the right choice of accessories.
Cover caps for G24/GX24 lampholders (see p. 290–293)

Lamp support for TC-D, TC-DEL lamps
Material: PC, white, UV-stabilised
Lamp position: 45°
Fixing foot with slot for screw M3.5
Weight: 1.5 g, unit: 500 pcs.
Type: 97031

Ref. No.: 105448

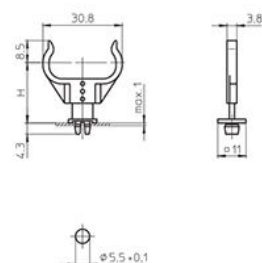


Lamp supports for TC-S, TC-SEL lamps
Height adjustable H: 17.5/20.5/23.5 mm
Push-fit foot for cut-out Ø 5.5 mm
for wall thickness up to 1 mm
Weight: 0.4/0.8/0.8 g, unit: 500 pcs.
Type: 35060

Ref. No.: 105775 foot, PC, white

Ref. No.: 105776 bracket, PC, crystal-clear, UV-stabilised

Ref. No.: 106416 bracket, PC, white, UV-stabilised

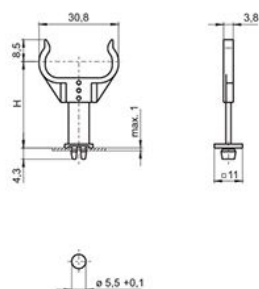


Lamp supports for TC-S, TC-SEL lamps
Height adjustable H: 27.5/30.5/33.5 mm
Push-fit foot for cut-out Ø 5.5 mm
for wall thickness up to 1 mm
Weight: 0.7/0.8/0.8 g, unit: 500 pcs.
Type: 35061

Ref. No.: 105931 foot, PC, white

Ref. No.: 105776 bracket, PC, crystal-clear, UV-stabilised

Ref. No.: 106416 bracket, PC, white, UV-stabilised

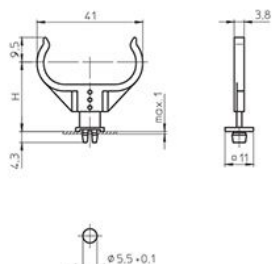


Lamp supports for TC-L lamps
Height adjustable H: 21/24/27 mm
Push-fit foot for cut-out Ø 5.5 mm
for wall thickness up to 1 mm
Weight: 0.4/1.3/1.1 g, unit: 500 pcs.
Type: 35760

Ref. No.: 105775 foot, PC, white

Ref. No.: 105777 bracket, PC, crystal-clear, UV-stabilised

Ref. No.: 106417 bracket, PC, white, UV-stabilised



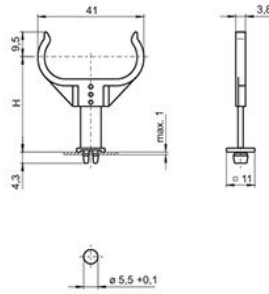
Lampholders and Accessories for TC Lamps

Lamp supports for TC-L lamps
 Height adjustable H: 31/34/37 mm
 Push-fit foot for cut-out \varnothing 5.5 mm
 for wall thickness up to 1 mm
 Weight: 0.7/1.3/1.1 g, unit: 500 pcs.
 Type: 35761

Ref. No.: 105931 foot, PC, white

Ref. No.: 105777 bracket, PC, crystal-clear,
 UV-stabilised

Ref. No.: 106417 bracket, PC, white,
 UV-stabilised



1

2

Lamp supports for TC-S, TC-SEL lamps

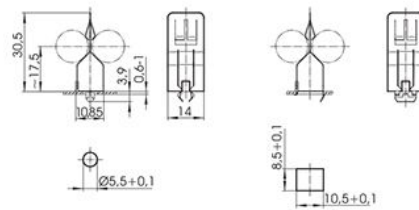
Material: stainless steel
 Weight: 1.3 g, unit: 500 pcs.

Type: 93056 push-fit foot for \varnothing 5.5 mm

Ref. No.: 509522

Type: 93057 push-fit foot for 8.5x10.5 mm

Ref. No.: 509521



3

4

Lamp supports for TC-F, TC-L lamps

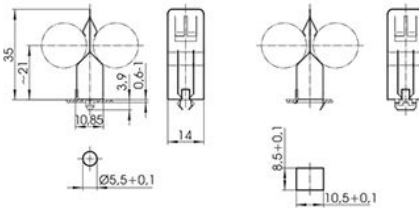
Material: stainless steel
 Weight: 1.5 g, unit: 500 pcs.

Type: 93058 push-fit foot for \varnothing 5.5 mm

Ref. No.: 509520

Type: 93059 push-fit foot for 8.5x10.5 mm

Ref. No.: 509519



5

6

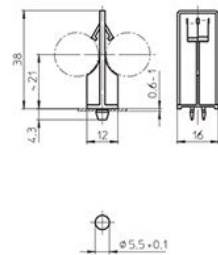
Lamp supports for TC-F, TC-L lamps

For wall thickness 0.6–1 mm
 Material: PC, white, UV-stabilised

Weight: 1.3 g, unit: 500 pcs.

Type: 97638 push-fit foot for \varnothing 5.5 mm

Ref. No.: 105981



7

8

Lamp support for TC-L lamps

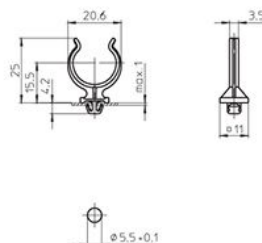
Material: PC, white, UV-stabilised
 Push-fit foot for cut-out \varnothing 5.5 mm

for wall thickness up to 1 mm

Weight: 0.7 g, unit: 500 pcs.

Type: 36060

Ref. No.: 108878



9

10

Lampholders and Accessories for TC Lamps

Lamp support for TC-L lamps

Material: PC, crystal-clear, UV-stabilised

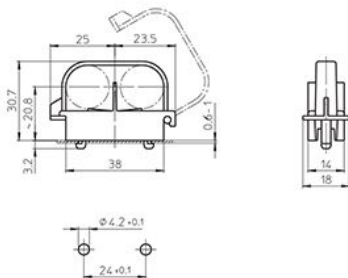
Lockable

Base split pins for wall thickness 0.6–1 mm

Weight: 4 g, unit: 500 pcs.

Type: 36061

Ref. No.: 101497



GX53-1 Lampholders, Accessories

For single-ended compact fluorescent lamps with integrated ballasts

GX53-1 lampholder

Casing: PC, white, T100, nominal rating: 2/250

Push-in terminals for through-wiring

for single-core leads: 0.5–1 mm²

for stranded leads:

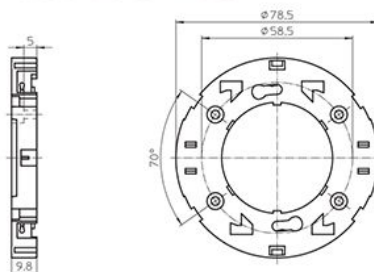
0.75 mm², tinned lead ends

Fixing holes for screws M3

Weight: 12.8 g, unit: 200 pcs.

Type: 11000

Ref. No.: 530878



GX53-1 lampholder

Fixing springs for installation into furniture panels

Casing: PC, white, T100, nominal rating: 2/250

Push-in terminals for through-wiring

for single-core leads: 0.5–1 mm²

for stranded leads:

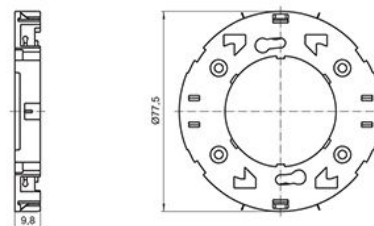
0.75 mm², tinned lead ends

Cut-out: Ø 78^{+0.2} mm

Weight: 13.2 g, unit: 200 pcs.

Type: 11010

Ref. No.: 530879



Cord grip/cover plate for GX53-1 lampholders

For leads H03VVH2-F 2X0.75, tinned lead ends

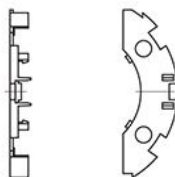
For luminaires of protection class II

Material: PC, white

Weight: 1.6 g, unit: 200 pcs.

Type: 97278

Ref. No.: 504939



Surface-mounted installation ring

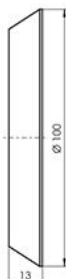
For wood or furniture panels

Material: PC, white

Weight: 10.4 g, unit: 100 pcs.

Type: 97277

Ref. No.: 504938



3 COMPACT AND



VS LAMPHOLDERS FOR COMPACT FLUORESCENT LAMPS

Vossloh-Schwabe provides a broad range of lampholders for single-ended compact fluorescent lamps, with regard to which the numerous fixing methods make just about any luminaire design possible.

As compact fluorescent lamps generate considerably less heat in comparison to incandescent lamps, the advantages provided by thermoplastics can be fully utilized for lampholder design.

Almost all VS lampholders for compact fluorescent lamps are made of thermoplastic PBT and therefore bear the T marking T140, which refers to the maximum base temperature in accordance with EN 61199 (VDE 0715 T9). The use of this highly heat-resistant material was born of close cooperation between Vossloh-Schwabe and the world's leading lamp manufacturers that also use PBT for producing lamp bases. In connection with fatigue-resistant, stainless steel lamp mounting springs, harmonizing the casing material ensures a permanent and secure lamp fit.

1

2

3

4

5

6

7

8

9

10

Lampholders and Accessories for TC Lamps

G24, GX24 lampholders

158-162

2G7 lampholders

163

G23 lampholders

164-166

GR10q lampholders

166-167

2G10 lampholders

167

2G11 lampholders

168

Accessories

169-171

GX53-1 lampholders, accessories

171

Technical details for fluorescent lamps

208-235

General technical details

348-348

Glossary

357-359

G24, GX24 Lampholders

For single-ended compact fluorescent lamps TC-D, TC-T, TC-DEL, TC-TEL

The drawings and photos contained in this chapter only show lampholders for lamps with base G24q-1. Further drawings of lamp bases can be found on page 230.

When mounting the lampholder it has to be considered that the TC-T and TC-TEL lamp is wider than the lampholder. When using the central hole for mounting additional depressions for anti-rotation pips have to be provided.

G24, GX24 lampholders

Plain casing

Casing: PBT GF, white, T140

Nominal rating: 2/500

Push-in twin terminals: 0.5–1 mm² (lamp circuit)

In addition for G24q, GX24q lampholders:

push-in terminals: 0.5–1 mm² (starter circuit)

Rear fixing holes for self-tapping screws

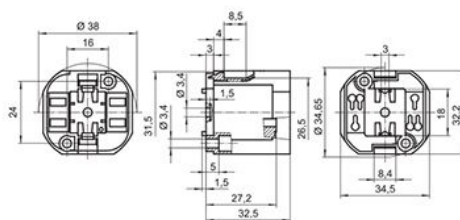
acc. to ISO 1481/7049-ST4.2-C/F

Front fixing holes for screws M3

Central fixing hole for screw M3

Rotation stop

For cover caps (see p. 291–293)



Type	Ref. No.	Base	Lamp	Output [W]	Weight [g]	Unit [pcs.]
71501	527735	G24d-1/GX24d-1	TC-D/TC-T	10, 13 / 13	13	500
71502	527736	G24d-2/GX24d-2	TC-D/TC-T	18 / 18	13	500
71503	527737	G24d-3/GX24d-3	TC-D/TC-T	26 / 26	13	500
71511	527739	G24q-1/GX24q-1	TC-DEL/TC-TEL	10, 13 / 13	14.5	500
71512	527740	G24q-2/GX24q-2	TC-DEL/TC-TEL	18 / 18	14.5	500
71513	527741	G24q-3/GX24q-3	TC-DEL/TC-TEL	26 / 26, 32	14.5	500
71519	527745	GX24q-3/-4*	TC-TEL	26, 32 / 42	14.5	500
71514	527742	GX24q-4	TC-TEL	42	14.5	500
71515	527743	GX24q-5	TC-TEL	57	15.1	500
71516	527744	GX24q-6	TC-TEL	70	15.1	500

* Lampholder 527745 may only be used in luminaires that are operated with electronic ballasts that have been certified according to the applicable standards and that cover the luminaire performance range of 26, 32 and 42 W.

1

2

3

4

5

6

7

8

9

10

Lampholders and Accessories for TC Lamps

G24, GX24 lampholders

External thread 40x2.5 IEC 60399

Casing: PBT GF, white, T140

Nominal rating: 2/500

Push-in twin terminals: 0.5–1 mm² (lamp circuit)

In addition for G24q, GX24q lampholders:

push-in terminals: 0.5–1 mm² (starter circuit)

Rear fixing holes for self-tapping screws

acc. to ISO 1481/7049-ST4.2-C/F

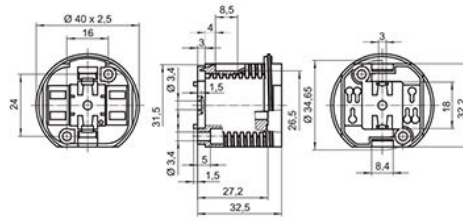
Front fixing holes for screws M3

Central fixing hole for screw M3

Rotation stop

For cover caps (see p. 291–293)

For screw rings (see p. 307)



Type	Ref. No.	Base	Lamp	Output [W]	Weight [g]	Unit (pcs.)
71001	527502	G24d-1/GX24d-1	TC-D/TC-T	10, 13 / 13	12.7	500
71002	527503	G24d-2/GX24d-2	TC-D/TC-T	18 / 18	12.7	500
71003	527504	G24d-3/GX24d-3	TC-D/TC-T	26 / 26	12.7	500
71011	527506	G24q-1/GX24q-1	TC-DEL/TC-TEL	10, 13 / 13	15.2	500
71012	527507	G24q-2/GX24q-2	TC-DEL/TC-TEL	18 / 18	15.2	500
71013	527508	G24q-3/GX24q-3	TC-DEL/TC-TEL	26 / 26, 32	15.2	500
71019	527512	GX24q-3/-4*	TC-TEL	26, 32 / 42	15.2	500
71014	527509	GX24q-4	TC-TEL	42	15.2	500
71015	527510	GX24q-5	TC-TEL	57	15.8	500
71016	527511	GX24q-6	TC-TEL	70	15.8	500

* Lampholder 527512 may only be used in luminaires that are operated with electronic ballasts that have been certified according to the applicable standards and that cover the luminaire performance range of 26, 32 and 42 W.

G24, GX24 lampholders

Profiled shape

Casing: PBT GF, white, T140

Nominal rating: 2/500

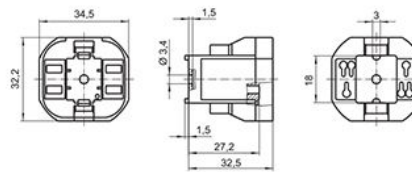
Push-in twin terminals: 0.5–1 mm² (lamp circuit)

In addition for G24q, GX24q lampholders:

push-in terminals: 0.5–1 mm² (starter circuit)

Central fixing hole for screw M3

Rotation stop



Type	Ref. No.	Base	Lamp	Output [W]	Weight [g]	Unit (pcs.)
71101	527529	G24d-1/GX24d-1	TC-D/TC-T	10, 13 / 13	8.5	500
71102	527530	G24d-2/GX24d-2	TC-D/TC-T	18 / 18	8.5	500
71103	527531	G24d-3/GX24d-3	TC-D/TC-T	26 / 26	8.5	500
71111	527533	G24q-1/GX24q-1	TC-DEL/TC-TEL	10, 13 / 13	10.9	500
71112	527534	G24q-2/GX24q-2	TC-DEL/TC-TEL	18 / 18	10.9	500
71113	527535	G24q-3/GX24q-3	TC-DEL/TC-TEL	26 / 26, 32	10.9	500
71119	527539	GX24q-3/-4*	TC-TEL	26, 32 / 42	10.9	500
71114	527536	GX24q-4	TC-TEL	42	10.9	500
71115	527537	GX24q-5	TC-TEL	57	11.1	500
71116	527538	GX24q-6	TC-TEL	70	11.1	500

* Lampholder 527539 may only be used in luminaires that are operated with electronic ballasts that have been certified according to the applicable standards and that cover the luminaire performance range of 26, 32 and 42 W.

Lampholders and Accessories for TC Lamps

G24, GX24 push-fit lampholders

Lamp position: 45°

Casing: PBT GF, white, T140

Nominal rating: 2/500

Push-in twin terminals: 0.5–1 mm² (lamp circuit)

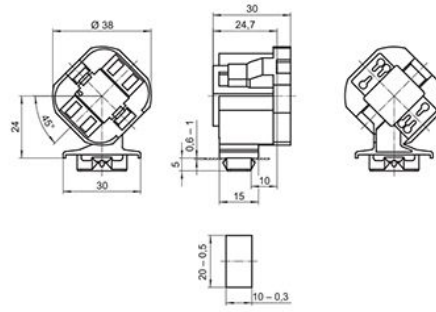
In addition for G24q, GX24q lampholders:

push-in terminals: 0.5–1 mm² (starter circuit)

Push-fit foot for cut-out 10x20 mm

for wall thickness 0.6–1 mm

Foot with facility for cable routing



Type	Ref. No.	Base	Lamp	Output (W)	Weight (g)	Unit (pcs.)
71301	527585	G24d-1/GX24d-1	TC-D/TC-T	10, 13 / 13	10.2	500
71302	527586	G24d-2/GX24d-2	TC-D/TC-T	18 / 18	10.2	500
71303	527587	G24d-3/GX24d-3	TC-D/TC-T	26 / 26	10.2	500
71311	527589	G24q-1/GX24q-1	TC-DEL/TC-TEL	10, 13 / 13	12.1	500
71312	527590	G24q-2/GX24q-2	TC-DEL/TC-TEL	18 / 18	12.1	500
71313	527591	G24q-3/GX24q-3	TC-DEL/TC-TEL	26 / 26, 32	12.1	500
71319	527596	GX24q-3/-4*	TC-TEL	26, 32 / 42	12.1	500
71314	527592	GX24q-4	TC-TEL	42	12.1	500
71315	527594	GX24q-5	TC-TEL	57	12.6	500
71316	527595	GX24q-6	TC-TEL	70	12.6	500

* Lampholder 527596 may only be used in luminaires that are operated with electronic ballasts that have been certified according to the applicable standards and that cover the luminaire performance range of 26, 32 and 42 W.

G24, GX24 push-fit lampholders

Casing: PBT GF, white, T140

Nominal rating: 2/500

Push-in twin terminals: 0.5–1 mm² (lamp circuit)

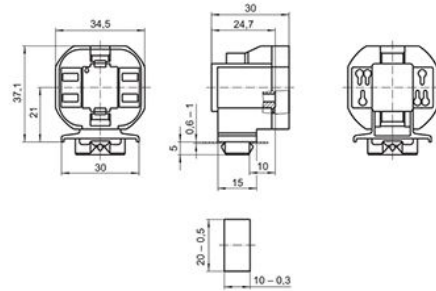
In addition for G24q, GX24q lampholders:

push-in terminals: 0.5–1 mm² (starter circuit)

Push-fit foot for cut-out 10x20 mm

for wall thickness 0.6–1 mm

Foot with facility for cable routing

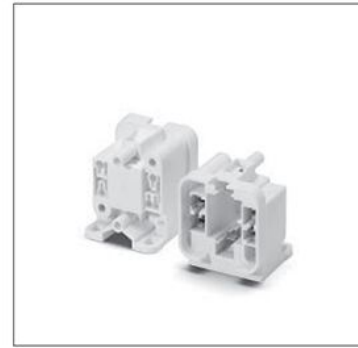
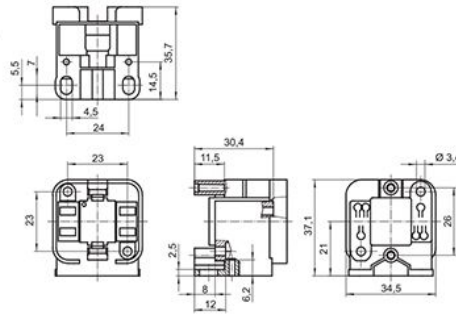


Type	Ref. No.	Base	Lamp	Output (W)	Weight (g)	Unit (pcs.)
71801	528029	G24d-1/GX24d-1	TC-D/TC-T	10, 13 / 13	10.2	500
71802	528030	G24d-2/GX24d-2	TC-D/TC-T	18 / 18	10.2	500
71803	528031	G24d-3/GX24d-3	TC-D/TC-T	26 / 26	10.2	500
71811	528033	G24q-1/GX24q-1	TC-DEL/TC-TEL	10, 13 / 13	12.1	500
71812	528034	G24q-2/GX24q-2	TC-DEL/TC-TEL	18 / 18	12.1	500
71813	528035	G24q-3/GX24q-3	TC-DEL/TC-TEL	26 / 26, 32	12.1	500
71819	528039	GX24q-3/-4*	TC-TEL	26, 32 / 42	12.1	500
71814	528036	GX24q-4	TC-TEL	42	12.1	500
71815	528037	GX24q-5	TC-TEL	57	12.7	500
71816	528038	GX24q-6	TC-TEL	70	12.7	500

* Lampholder 528039 may only be used in luminaires that are operated with electronic ballasts that have been certified according to the applicable standards and that cover the luminaire performance range of 26, 32 and 42 W.

Lampholders and Accessories for TC Lamps

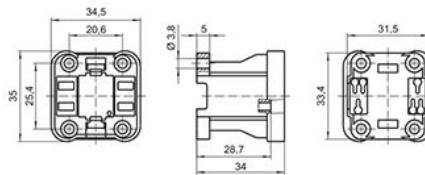
G24, GX24 surface-mounted lampholders
 Casing: PBT GF, white, T140, Nominal rating: 2/500
 Push-in twin terminals: 0.5–1 mm² (lamp circuit)
 In addition for G24q, GX24q lampholders:
 push-in terminals: 0.5–1 mm² (starter circuit)
 Base fixing holes for self-tapping screws
 acc. to ISO 1481/7049-ST4.2-C/F
 Base oblong holes for screws M4
 Rear fixing holes for self-tapping screws
 acc. to ISO 1481/7049-ST2.9-C/F
 and ST4.2-C/F
 Front fixing holes for screws M3



Type	Ref. No.	Base	Lamp	Output (W)	Weight (g)	Unit (pcs.)
71701	527790	G24d-1/GX24d-1	TC-D/TC-T	10, 13 / 13	13.2	500
71702	527791	G24d-2/GX24d-2	TC-D/TC-T	18 / 18	13.2	500
71703	527792	G24d-3/GX24d-3	TC-D/TC-T	26 / 26	13.2	500
71711	527794	G24q-1/GX24q-1	TC-DEL/TC-TEL	10, 13 / 13	15.2	500
71712	527795	G24q-2/GX24q-2	TC-DEL/TC-TEL	18 / 18	15.2	500
71713	527796	G24q-3/GX24q-3	TC-DEL/TC-TEL	26 / 26, 32	15.2	500
71719	527800	GX24q-3/-4*	TC-TEL	26, 32 / 42	15.2	500
71714	527797	GX24q-4	TC-TEL	42	15.2	500
71715	527798	GX24q-5	TC-TEL	57	15.8	500
71716	527799	GX24q-6	TC-TEL	70	15.8	500

* Lampholder 527800 may only be used in luminaires that are operated with electronic ballasts that have been certified according to the applicable standards and that cover the luminaire performance range of 26, 32 and 42 W. G24, GX24 surface-mounted lampholders

Casing: PBT GF, white, T140
 Nominal rating: 2/500
 Push-in twin terminals: 0.5–1 mm² (lamp circuit)
 In addition for G24q, GX24q lampholders:
 push-in terminals: 0.5–1 mm² (starter circuit)
 Front fixing holes for screws M3



Type	Ref. No.	Base	Lamp	Output (W)	Weight (g)	Unit (pcs.)
71201	527556	G24d-1/GX24d-1	TC-D/TC-T	10, 13 / 13	12	500
71202	527557	G24d-2/GX24d-2	TC-D/TC-T	18 / 18	12	500
71203	527558	G24d-3/GX24d-3	TC-D/TC-T	26 / 26	12	500
71211	527560	G24q-1/GX24q-1	TC-DEL/TC-TEL	10, 13 / 13	12.9	500
71212	527561	G24q-2/GX24q-2	TC-DEL/TC-TEL	18 / 18	12.9	500
71213	527562	G24q-3/GX24q-3	TC-DEL/TC-TEL	26 / 26, 32	12.9	500
71219	527566	GX24q-3/-4*	TC-TEL	26, 32 / 42	12.9	500
71214	527563	GX24q-4	TC-TEL	42	12.9	500
71215	527564	GX24q-5	TC-TEL	57	13.5	500
71216	527565	GX24q-6	TC-TEL	70	13.5	500

* Lampholder 527566 may only be used in luminaires that are operated with electronic ballasts that have been certified according to the applicable standards and that cover the luminaire performance range of 26, 32 and 42 W.

Lampholders and Accessories for TC Lamps

G24, GX24 push-fit lampholders

Casing: PBT GF, white, T140

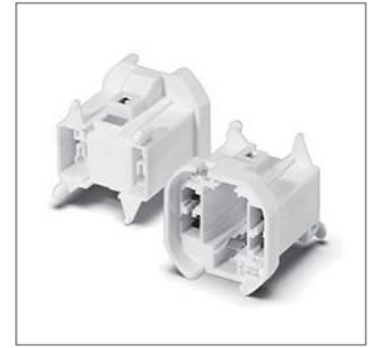
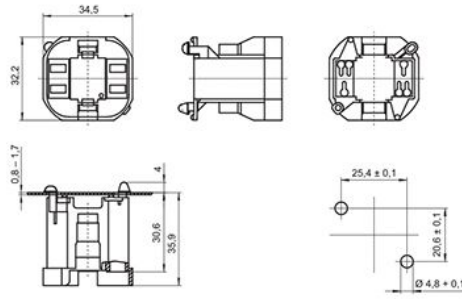
Nominal rating: 2/500

Push-in twin terminals: 0.5–1 mm² (lamp circuit)

In addition for G24q, GX24q lampholders:

push-in terminals: 0.5–1 mm² (starter circuit)

Base split pins for wall thickness 0.8–1.7 mm



Type	Ref. No.	Base	Lamp	Output (W)	Weight (g)	Unit (pcs.)
71601	527762	G24d-1/GX24d-1	TC-D/TC-T	10, 13 / 13	10.5	500
71602	527763	G24d-2/GX24d-2	TC-D/TC-T	18 / 18	10.5	500
71603	527764	G24d-3/GX24d-3	TC-D/TC-T	26 / 26	10.5	500
71611	527766	G24q-1/GX24q-1	TC-DEL/TC-TEL	10, 13 / 13	12	500
71612	527768	G24q-2/GX24q-2	TC-DEL/TC-TEL	18 / 18	12	500
71613	527769	G24q-3/GX24q-3	TC-DEL/TC-TEL	26 / 26, 32	12	500
71619	527773	GX24q-3/-4*	TC-TEL	26, 32 / 42	12	500
71614	527770	GX24q-4	TC-TEL	42	12	500
71615	527771	GX24q-5	TC-TEL	57	12.6	500
71616	527772	GX24q-6	TC-TEL	70	12.6	500

* Lampholder 527773 may only be used in luminaires that are operated with electronic ballasts that have been certified according to the applicable standards and that cover the luminaire performance range of 26, 32 and 42 W.

G24, GX24 push-fit lampholders

Casing: PBT GF, white, T140

Nominal rating: 2/500

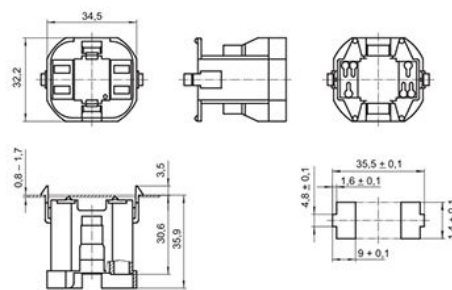
Push-in twin terminals: 0.5–1 mm² (lamp circuit)

In addition for G24q, GX24q lampholders:

push-in terminals: 0.5–1 mm² (starter circuit)

Rear split pins for wall thickness 0.8–1.7 mm

Width of split pin: 4.5 mm



Type	Ref. No.	Base	Lamp	Output (W)	Weight (g)	Unit (pcs.)
72101	528116	G24d-1/GX24d-1	TC-D/TC-T	10, 13 / 13	10.4	500
72102	528117	G24d-2/GX24d-2	TC-D/TC-T	18 / 18	10.4	500
72103	528118	G24d-3/GX24d-3	TC-D/TC-T	26 / 26	10.4	500
72111	528120	G24q-1/GX24q-1	TC-DEL/TC-TEL	10, 13 / 13	12.3	500
72112	528121	G24q-2/GX24q-2	TC-DEL/TC-TEL	18 / 18	12.3	500
72113	528122	G24q-3/GX24q-3	TC-DEL/TC-TEL	26 / 26, 32	12.3	500
72119	528126	GX24q-3/-4*	TC-TEL	26, 32 / 42	12.3	500
72114	528123	GX24q-4	TC-TEL	42	12.3	500
72115	528124	GX24q-5	TC-TEL	57	12.9	500
72116	528125	GX24q-6	TC-TEL	70	12.9	500

* Lampholder 528126 may only be used in luminaires that are operated with electronic ballasts that have been certified according to the applicable standards and that cover the luminaire performance range of 26, 32 and 42 W.