

# Lampholders and Accessories for TC Lamps

G24, GX24 push-fit lampholders

Casing: PBT GF, white, T140

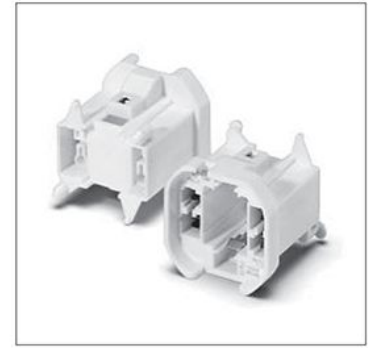
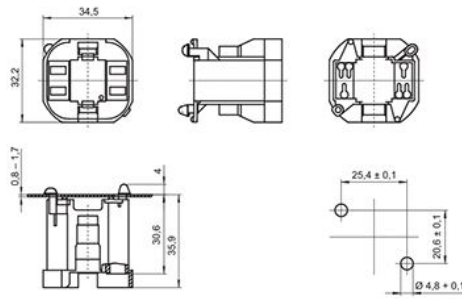
Nominal rating: 2/500

Push-in twin terminals: 0.5–1 mm<sup>2</sup> (lamp circuit)

In addition for G24q, GX24q lampholders:

push-in terminals: 0.5–1 mm<sup>2</sup> (starter circuit)

Base split pins for wall thickness 0.8–1.7 mm



Type	Ref. No.	Base	Lamp	Output (W)	Weight (g)	Unit (pcs.)
71601	<b>527762</b>	G24d-1/GX24d-1	TC-D/TC-T	10, 13 / 13	10.5	500
71602	<b>527763</b>	G24d-2/GX24d-2	TC-D/TC-T	18 / 18	10.5	500
71603	<b>527764</b>	G24d-3/GX24d-3	TC-D/TC-T	26 / 26	10.5	500
71611	<b>527766</b>	G24q-1/GX24q-1	TC-DEL/TC-TEL	10, 13 / 13	12	500
71612	<b>527768</b>	G24q-2/GX24q-2	TC-DEL/TC-TEL	18 / 18	12	500
71613	<b>527769</b>	G24q-3/GX24q-3	TC-DEL/TC-TEL	26 / 26, 32	12	500
71619	<b>527773</b>	GX24q-3/-4*	TC-TEL	26, 32 / 42	12	500
71614	<b>527770</b>	GX24q-4	TC-TEL	42	12	500
71615	<b>527771</b>	GX24q-5	TC-TEL	57	12.6	500
71616	<b>527772</b>	GX24q-6	TC-TEL	70	12.6	500

\* Lampholder 527773 may only be used in luminaires that are operated with electronic ballasts that have been certified according to the applicable standards and that cover the luminaire performance range of 26, 32 and 42 W.

G24, GX24 push-fit lampholders

Casing: PBT GF, white, T140

Nominal rating: 2/500

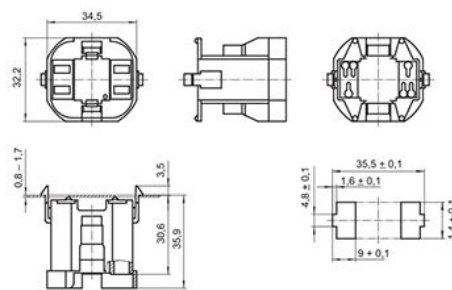
Push-in twin terminals: 0.5–1 mm<sup>2</sup> (lamp circuit)

In addition for G24q, GX24q lampholders:

push-in terminals: 0.5–1 mm<sup>2</sup> (starter circuit)

Rear split pins for wall thickness 0.8–1.7 mm

Width of split pin: 4.5 mm



Type	Ref. No.	Base	Lamp	Output (W)	Weight (g)	Unit (pcs.)
72101	<b>528116</b>	G24d-1/GX24d-1	TC-D/TC-T	10, 13 / 13	10.4	500
72102	<b>528117</b>	G24d-2/GX24d-2	TC-D/TC-T	18 / 18	10.4	500
72103	<b>528118</b>	G24d-3/GX24d-3	TC-D/TC-T	26 / 26	10.4	500
72111	<b>528120</b>	G24q-1/GX24q-1	TC-DEL/TC-TEL	10, 13 / 13	12.3	500
72112	<b>528121</b>	G24q-2/GX24q-2	TC-DEL/TC-TEL	18 / 18	12.3	500
72113	<b>528122</b>	G24q-3/GX24q-3	TC-DEL/TC-TEL	26 / 26, 32	12.3	500
72119	<b>528126</b>	GX24q-3/-4*	TC-TEL	26, 32 / 42	12.3	500
72114	<b>528123</b>	GX24q-4	TC-TEL	42	12.3	500
72115	<b>528124</b>	GX24q-5	TC-TEL	57	12.9	500
72116	<b>528125</b>	GX24q-6	TC-TEL	70	12.9	500

\* Lampholder 528126 may only be used in luminaires that are operated with electronic ballasts that have been certified according to the applicable standards and that cover the luminaire performance range of 26, 32 and 42 W.

## 2G7 Lampholders

For single-ended compact fluorescent lamps TC-SEL

### 2G7 push-fit lampholder

Casing: PBT GF, white, T140, nominal rating: 2/250

Push-in twin terminals: 0.5–1 mm<sup>2</sup> (lamp circuit)

Push-in terminals: 0.5–1 mm<sup>2</sup> (starter circuit)

Rear fixing hole for self-tapping screw

acc. to ISO 1481/7049-ST4.2-C/F

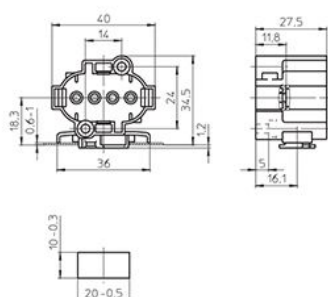
Front fixing holes for screws M3

Locking of the lampholder by a 15° turn

Weight: 13.7 g, unit: 500 pcs.

Type: 35610

**Ref. No.: 109235**



### 2G7 push-fit lampholder

Casing: PBT GF, white, T140

Nominal rating: 2/250

Push-in twin terminals: 0.5–1 mm<sup>2</sup> (lamp circuit)

Push-in terminals: 0.5–1 mm<sup>2</sup> (starter circuit)

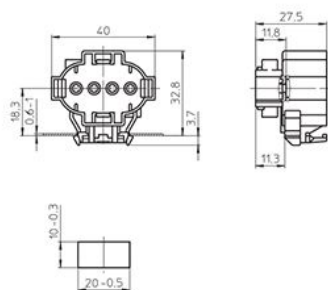
Push-fit foot for cut-out 10x20 mm

for wall thickness 0.6–1 mm

Weight: 18 g, unit: 500 pcs.

Type: 35613

**Ref. No.: 500574**



### 2G7 surface-mounted lampholder

Casing: PBT GF, white, T140, nominal rating: 2/250

Push-in twin terminals: 0.5–1 mm<sup>2</sup> (lamp circuit)

Push-in terminals: 0.5–1 mm<sup>2</sup> (starter circuit)

Fixing holes for screws M4

Lateral and rear fixing holes for self-tapping screws

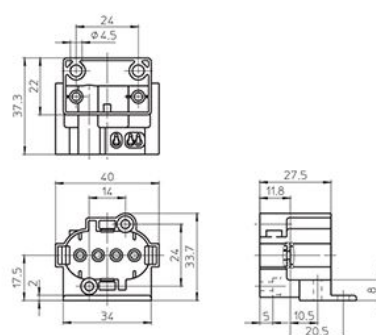
acc. to ISO 1481/7049-ST4.2-C/F

Front fixing holes for screws M3

Weight: 18.1 g, unit: 500 pcs.

Type: 35611

**Ref. No.: 109238**



### 2G7 surface-mounted lampholder

Casing: PBT GF, white, T140

Nominal rating: 2/250

Push-in twin terminals: 0.5–1 mm<sup>2</sup> (lamp circuit)

Push-in terminals: 0.5–1 mm<sup>2</sup> (starter circuit)

Rear fixing holes for self-tapping screws

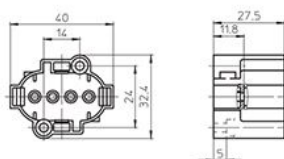
acc. to ISO 1481/7049-ST4.2-C/F

Front fixing holes for screws M3

Weight: 14 g, unit: 500 pcs.

Type: 35612

**Ref. No.: 109240**



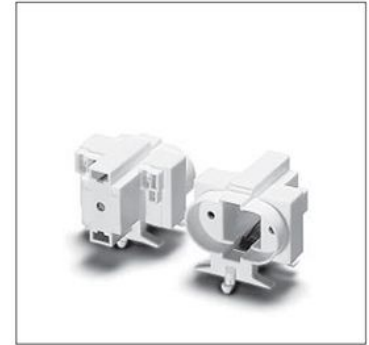
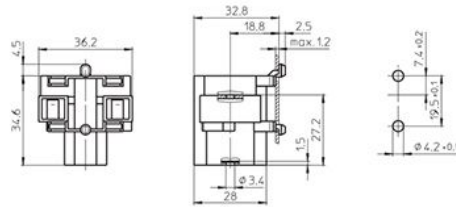
## G23 Lampholders

### For single-ended compact fluorescent lamps TC-5

If the central hole is used for mounting, make sure there is no risk of rotation.

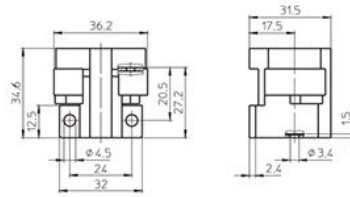
G23 push-fit lampholder  
 Casing: PBT GF, white, T140  
 Nominal rating: 2/250  
 Push-in twin terminals: 0.5–1 mm<sup>2</sup>  
 Split pins for wall thickness up to 1.2 mm  
 Central fixing hole for screw M3  
 Weight: 12 g, unit: 500 pcs.  
 Type: 35004

**Ref. No.: 101298**



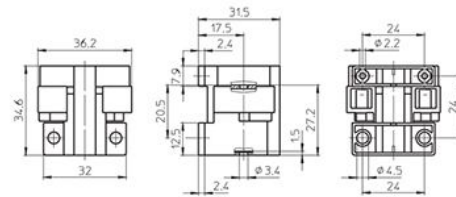
G23 surface-mounted lampholder  
 Casing: PBT GF, white, T140  
 Nominal rating: 2/250  
 Push-in twin terminals: 0.5–1 mm<sup>2</sup>  
 Fixing holes for screws M4  
 Central fixing hole for screw M3  
 Weight: 12.4 g, unit: 500 pcs.  
 Type: 35006

**Ref. No.: 101306**



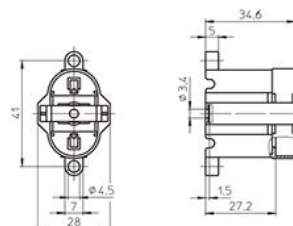
G23 lampholder  
 For push-fit on track  
 Casing: PBT GF, white, T140, nominal rating: 2/250  
 Push-in twin terminals: 0.5–1 mm<sup>2</sup>  
 Lateral fixing holes for self-tapping screws acc. to ISO 1481/7049-ST2.9-C/F  
 Fixing holes for screws M4  
 Central fixing hole for screw M3  
 Weight: 14 g, unit: 500 pcs.  
 Type: 35007

**Ref. No.: 101310**



G23 surface-mounted lampholder  
 Casing: PBT GF, white, T140  
 Nominal rating: 2/250  
 Push-in twin terminals: 0.5–1 mm<sup>2</sup>  
 Fixing holes for screws M4  
 Central fixing hole for screw M3  
 Weight: 11.1 g, unit: 500 pcs.  
 Type: 35008

**Ref. No.: 101314**



1

2

3

4

5

6

7

8

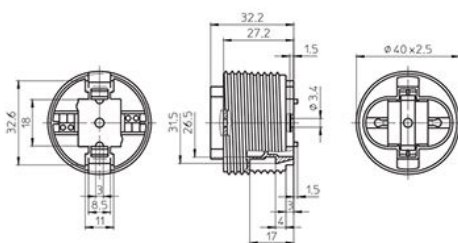
9

10

# Lampholders and Accessories for TC Lamps

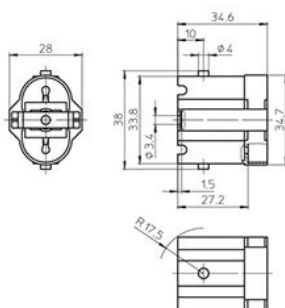
G23 lampholder, for cover caps (see p. 291–293)  
 External thread 40x2.5 IEC 60399  
 Casing: PBT GF, white, T140, nominal rating: 2/250  
 Push-in twin terminals: 0.5–1 mm<sup>2</sup>  
 Central fixing hole for screw M3  
 When using the central hole for mounting additional depressions for anti-rotation pips have to be provided.  
 For screw rings (see p. 307)  
 Weight: 16.3 g, unit: 500 pcs.  
 Type: 35010

**Ref. No.: 101320**



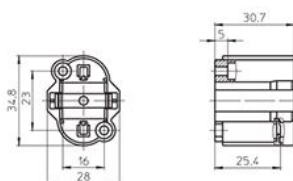
G23 lampholder  
 Casing: PBT GF, white, T140  
 Nominal rating: 2/250  
 Push-in twin terminals: 0.5–1 mm<sup>2</sup>  
 Lateral pivots for bracket 105820  
 Central fixing hole for screw M3  
 Weight: 11 g, unit: 500 pcs.  
 Type: 35011

**Ref. No.: 101324**



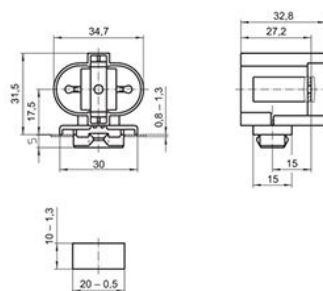
G23 surface-mounted lampholder  
 Casing: PBT GF, white, T140  
 Nominal rating: 2/250  
 Push-in twin terminals: 0.5–1 mm<sup>2</sup>  
 Front fixing holes for screws M3  
 Rear fixing holes for selftapping screws acc. to ISO 1481/7049-ST4.2-C/F  
 Weight: 11.9 g, unit: 500 pcs.  
 Type: 35012

**Ref. No.: 108898**



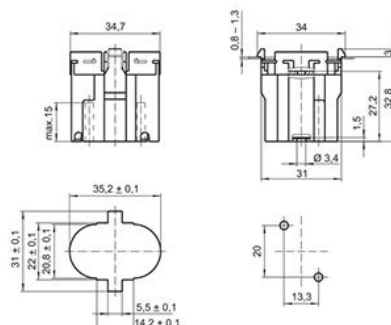
G23 push-fit lampholder  
 Casing: PBT GF, white, T140  
 Nominal rating: 2/250  
 Push-in twin terminals: 0.5–1 mm<sup>2</sup>  
 Push-fit foot for wall thickness 0.8–1.3 mm  
 Central fixing hole for screw M3  
 Weight: 11 g, unit: 500 pcs.  
 Type: 35051

**Ref. No.: 101344**



G23 push-fit lampholder  
 Casing: PBT GF, white, T140  
 Nominal rating: 2/250  
 Push-in twin terminals: 0.5–1 mm<sup>2</sup>  
 Front split pins for wall thickness 0.8–1.3 mm  
 Central fixing hole for screw M3  
 Weight: 12 g, unit: 500 pcs.  
 Type: 35052

**Ref. No.: 101346**



# Lampholders and Accessories for TC Lamps

G23 lampholder

Casing: PBT GF, white, T140

Nominal rating: 2/250

Push-in terminals: 0.5–1 mm<sup>2</sup>

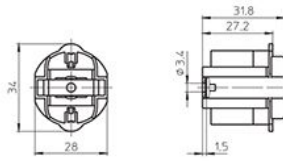
Central fixing hole for screw M3

Particularly suitable for narrow mounting  
(e.g. for insertion into tube systems)

Weight: 8 g, unit: 500 pcs.

Type: 35201

**Ref. No.: 101364**



1

2

3

## GR10q Lampholders

For single-ended compact fluorescent lamps TC-DD

GR10q push-fit lampholder

Casing: PC, white, T110

Nominal rating: 2/250

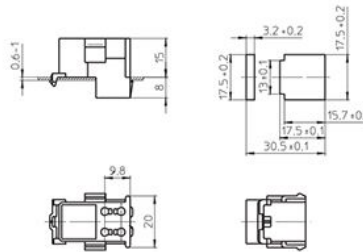
Base push-in terminals: 0.5–1 mm<sup>2</sup>

Base fixing clip for wall thickness 0.6–1 mm

Weight: 6.2 g, unit: 1000 pcs.

Type: 35500

**Ref. No.: 108927**



5

6

GR10q push-fit lampholder

Casing: PC, white, T110

Nominal rating: 2/250

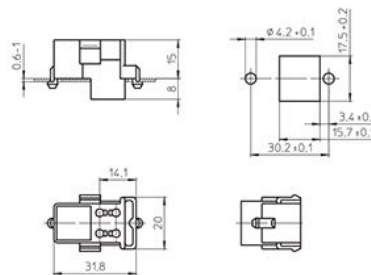
Base push-in terminals: 0.5–1 mm<sup>2</sup>

Base split pins for wall thickness 0.6–1 mm

Weight: 6.2 g, unit: 1000 pcs.

Type: 35510

**Ref. No.: 108928**



7

8

GR10q push-fit lampholder

Material: PBT, white, T110

Nominal rating: 2/250

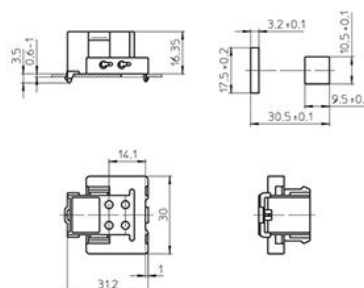
Lateral push-in terminals: 0.5–1 mm<sup>2</sup>

Base fixing clip for wall thickness 0.6–1 mm

Weight: 7.2 g, unit: 1000 pcs.

Type: 35530

**Ref. No.: 108932**



9

10